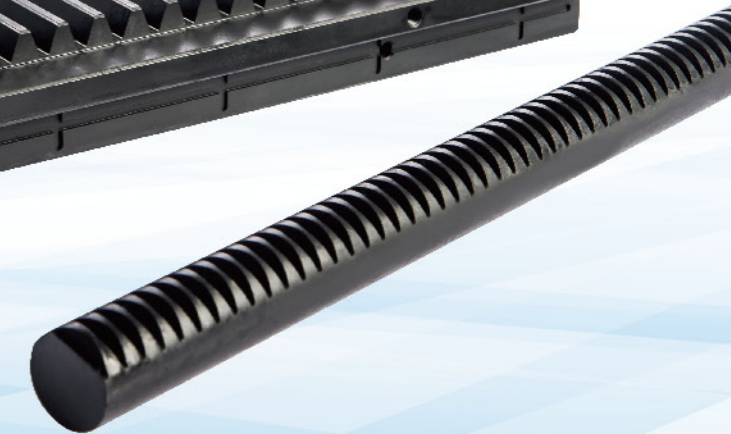
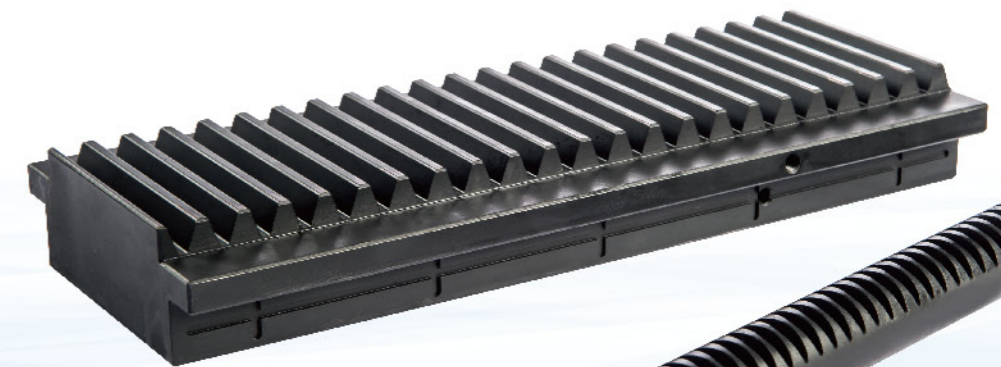


Company Profile

KAI HE MACHINERY CO., LTD manufacturer dedicated to rack production, with leading manufacturing techniques, processing facilities and rich practical experience. Following our business motto to provide our customers with satisfactory products and services, we cordially welcome all enquiry from the industry and the commercial area alike. We believe that only by goodwill and professionalism, which we have held well, can a firm provide customers with complete service quality, maximal production efficiency, and lead the corporation toward the path of cost-down and high quality.

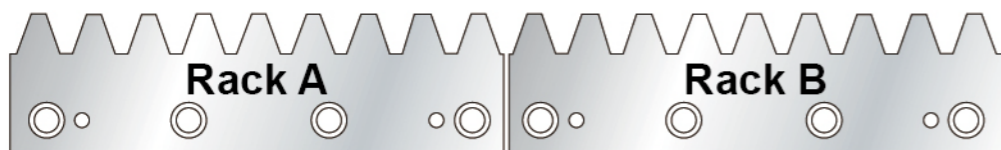
Our production facilities now include rack teeth rollers, MCV vertical machine centers, rack grinders, racks Grinding machine all dedicated to rack fabrication and general-purpose machines likeesting equipments like 3-D testers, which comprise a sound system of production and quality inspection.



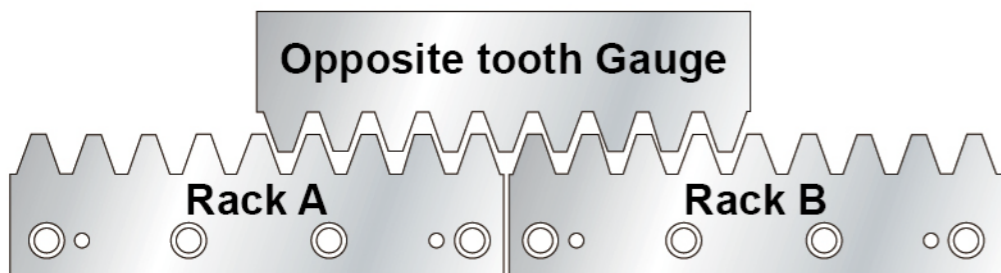
Rack Assembly

1. Install the rack A and rack B on the base.
(The side of the rack and the base are corresponding to the installation hole)
2. Install the reverse gauge to confirm that the pitch between the rack and the rack is correct? (Such as tooth pitch is abnormal, please contact our technical staff)
3. Mount the pin to the hole after confirming, the pin is fixed to the pin hole on the side of the rack.

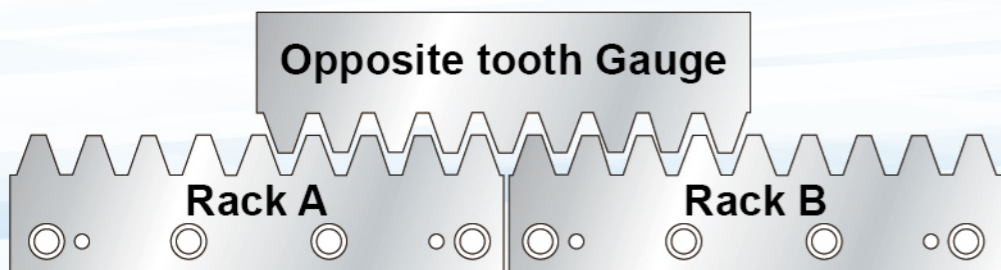
Installation step 1



Installation step 2

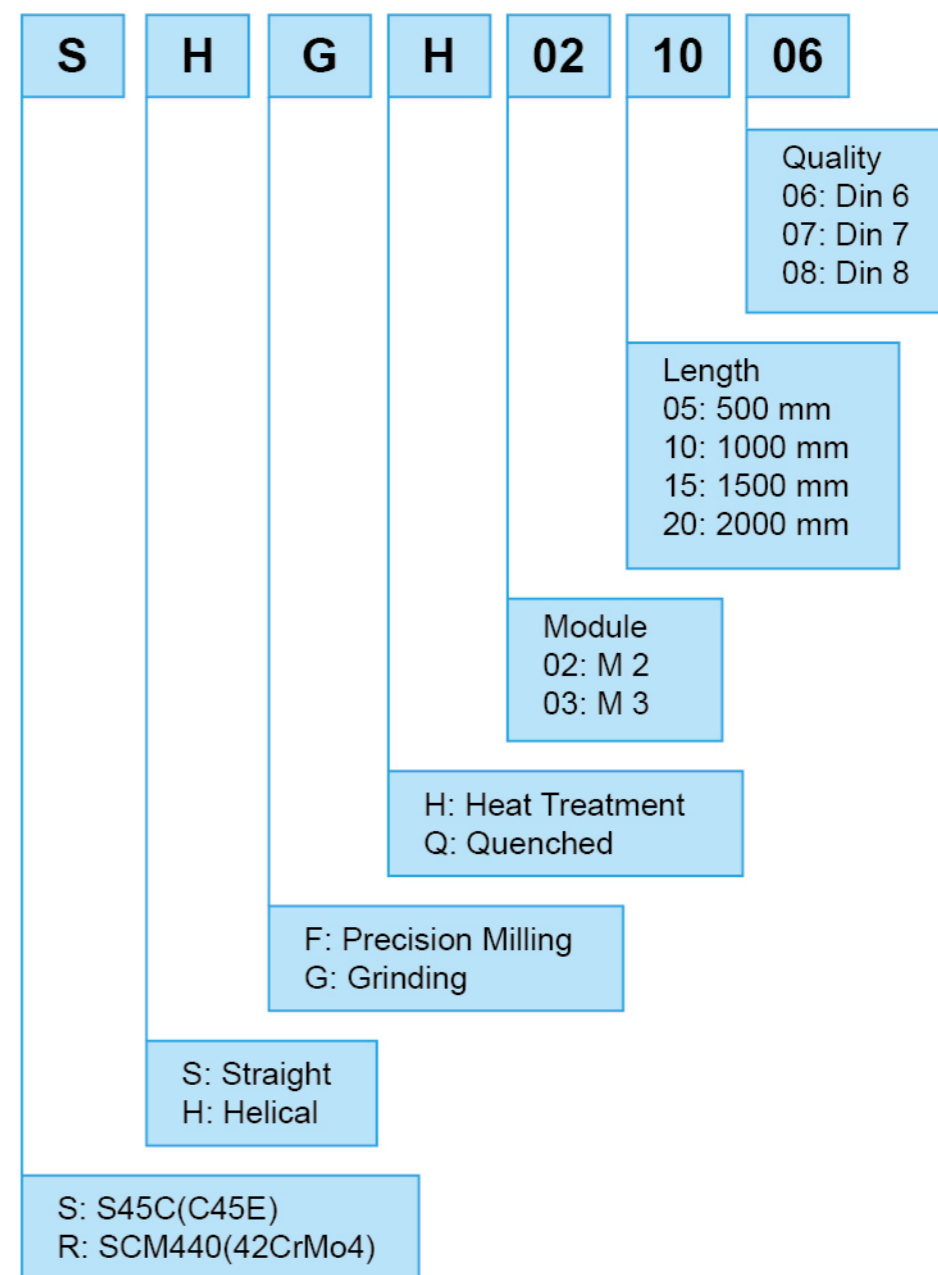


Installation step 3



Rack Order Code

Example: SHGH021006



| | | | | | | | | | | | | |
|------|---|----|----|----|----|----|----|----|---|----|----|----|
| Din | 1 | 2 | 3 | 4 | 5 | 6 | 7 | 8 | 9 | 10 | 11 | 12 |
| JIS | | | | 0 | 1 | 2 | 3 | 4 | 5 | 6 | 7 | 8 |
| ISO | 1 | 2 | 3 | 4 | 5 | 6 | 7 | 8 | 9 | 10 | 11 | 12 |
| AGMA | | 16 | 15 | 14 | 13 | 12 | 11 | 10 | 9 | 8 | 7 | 6 |

Overview of Racks

| Quality | Module | Tooth Thickness Tolerance (µm) | Applications (Examples) |
|---------|--------|--------------------------------|--|
| 5 | 2~12 | -15 ~ 0 | <ul style="list-style-type: none"> High Precision Machine Tools with Electrical Preload Machine Tools, Lifting Axis, Multiple Pinion Contact |
| 6 | 1~12 | -20 ~ 0 | <ul style="list-style-type: none"> Wood, Plastic, Composite, Aluminium Working Machines Machine Tools, Integratable Racks, Water Cutting Machines, Tube Bending Systems, Plasma Cutting Machines, Laser Cutting Machines |
| 7 | 2~4 | -40 ~ 0 | <ul style="list-style-type: none"> woodworking Machines, Linear Axis with High Requirement for a Smooth Running |
| 8 | 1.5~12 | -48 ~ 0 | <ul style="list-style-type: none"> Portals, Handling Linear Axis Linear Axis |
| 9 | 1~6 | -63 ~ 0 | <ul style="list-style-type: none"> Linear Axis with Low Load Feed Units for Adjustment |
| 10 | 1~12 | -90 ~ 0 | <ul style="list-style-type: none"> Lifting Axis, Handling, welding Robots |

| Module | Deviation | DIN5 | DIN6 | DIN7 | DIN8 | DIN9 | DIN10 |
|--------|--------------------------------|------|------|------|------|------|-------|
| 1.5 | Tooth Thickness Tolerance (µm) | -15 | -20 | -40 | -66 | -87 | -124 |
| | Single Pitch Error (µm) | ≤ 6 | ≤ 8 | ≤ 12 | ≤ 16 | ≤ 23 | ≤ 37 |
| | Total Pitch Error (µm) | ≤ 24 | ≤ 36 | ≤ 48 | ≤ 66 | ≤ 90 | ≤ 148 |

| Module | Deviation | DIN5 | DIN6 | DIN7 | DIN8 | DIN9 | DIN10 |
|--------|--------------------------------|------|------|------|------|------|-------|
| 2 | Tooth Thickness Tolerance (µm) | -15 | -20 | -40 | -66 | -87 | -124 |
| | Single Pitch Error (µm) | ≤ 6 | ≤ 8 | ≤ 12 | ≤ 16 | ≤ 22 | ≤ 37 |
| | Total Pitch Error (µm) | ≤ 24 | ≤ 36 | ≤ 48 | ≤ 66 | ≤ 90 | ≤ 148 |

| Module | Deviation | DIN5 | DIN6 | DIN7 | DIN8 | DIN9 | DIN10 |
|--------|--------------------------------|------|------|------|------|-------|-------|
| 3 | Tooth Thickness Tolerance (µm) | -15 | -10 | -40 | -66 | -87 | -124 |
| | Single Pitch Error (µm) | ≤ 6 | ≤ 9 | ≤ 12 | ≤ 18 | ≤ 25 | ≤ 39 |
| | Total Pitch Error (µm) | ≤ 26 | ≤ 36 | ≤ 48 | ≤ 72 | ≤ 100 | ≤ 162 |

| Module | Deviation | DIN5 | DIN6 | DIN7 | DIN8 | DIN9 | DIN10 |
|--------|--------------------------------|------|------|------|------|-------|-------|
| 4 | Tooth Thickness Tolerance (µm) | -15 | -20 | -40 | -66 | -87 | -124 |
| | Single Pitch Error (µm) | ≤ 7 | ≤ 10 | ≤ 12 | ≤ 19 | ≤ 28 | ≤ 43 |
| | Total Pitch Error (µm) | ≤ 28 | ≤ 36 | ≤ 48 | ≤ 72 | ≤ 110 | ≤ 175 |

| Module | Deviation | DIN5 | DIN6 | DIN7 | DIN8 | DIN9 | DIN10 |
|--------|--------------------------------|------|------|------|------|-------|-------|
| 5 | Tooth Thickness Tolerance (μm) | -15 | -20 | -40 | -66 | -87 | -124 |
| | Single Pitch Error (μm) | ≤ 7 | ≤ 10 | ≤ 12 | ≤ 18 | ≤ 28 | ≤ 43 |
| | Total Pitch Error (μm) | ≤ 28 | ≤ 40 | ≤ 52 | ≤ 80 | ≤ 110 | ≤ 175 |

| Module | Deviation | DIN5 | DIN6 | DIN7 | DIN8 | DIN9 | DIN10 |
|--------|--------------------------------|------|------|------|------|-------|-------|
| 6 | Tooth Thickness Tolerance (μm) | -15 | -20 | -40 | -66 | -87 | -124 |
| | Single Pitch Error (μm) | ≤ 7 | ≤ 10 | ≤ 12 | ≤ 18 | ≤ 28 | ≤ 43 |
| | Total Pitch Error (μm) | ≤ 28 | ≤ 40 | ≤ 52 | ≤ 80 | ≤ 110 | ≤ 175 |

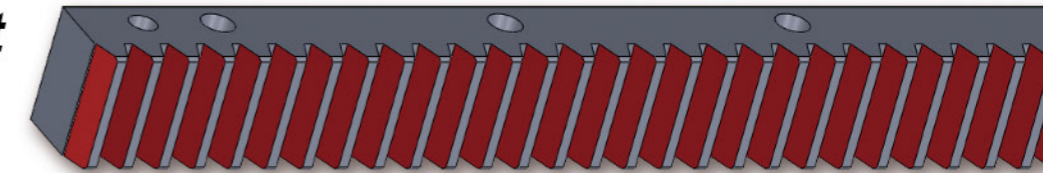
| Module | Deviation | DIN5 | DIN6 | DIN7 | DIN8 | DIN9 | DIN10 |
|--------|--------------------------------|------|------|------|------|-------|-------|
| 8 | Tooth Thickness Tolerance (μm) | -15 | -20 | -40 | -66 | -87 | -124 |
| | Single Pitch Error (μm) | ≤ 8 | ≤ 11 | ≤ 12 | ≤ 22 | ≤ 31 | ≤ 49 |
| | Total Pitch Error (μm) | ≤ 31 | ≤ 43 | ≤ 52 | ≤ 80 | ≤ 110 | ≤ 188 |

| Module | Deviation | DIN5 | DIN6 | DIN7 | DIN8 | DIN9 | DIN10 |
|--------|--------------------------------|------|------|------|------|-------|-------|
| 10 | Tooth Thickness Tolerance (μm) | -15 | -20 | -40 | -66 | -87 | -124 |
| | Single Pitch Error (μm) | ≤ 8 | ≤ 11 | ≤ 12 | ≤ 22 | ≤ 31 | ≤ 49 |
| | Total Pitch Error (μm) | ≤ 31 | ≤ 43 | ≤ 52 | ≤ 80 | ≤ 110 | ≤ 188 |

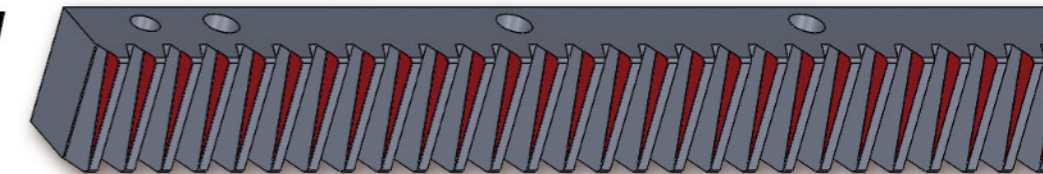
Rack Assembly

At rack and pinion drives, the pitch lines of pinion and rack has to be parallel. To check this, we recommend using a red compound and check the gear mesh contact pattern under load conditions.

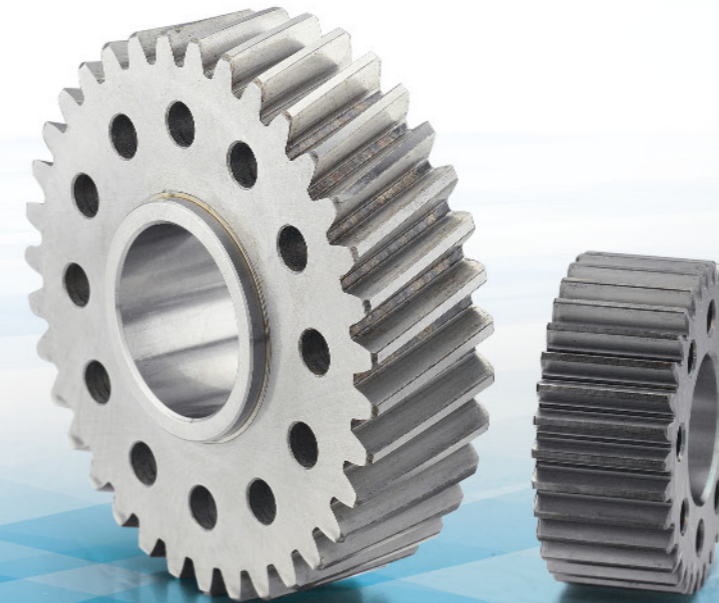
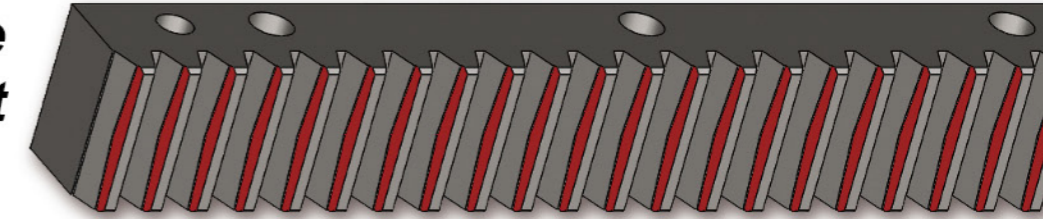
Correct



Non Parallel



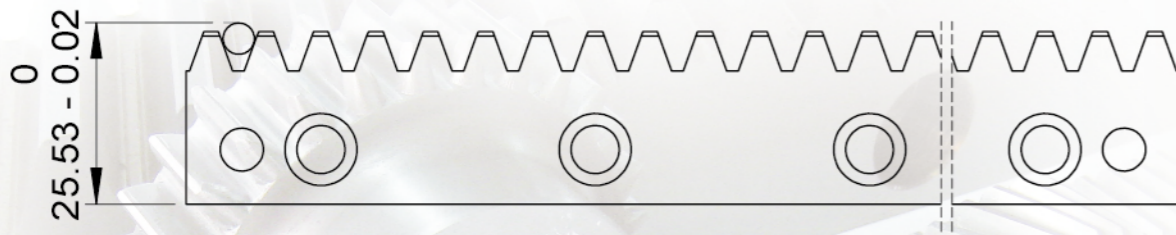
Center Distance Incorrect



Tooth Thickness Tolerance

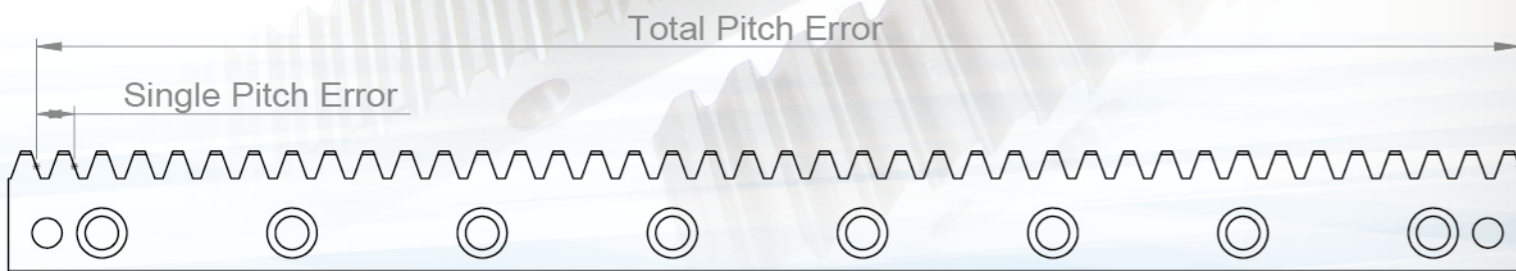
Relationship between tooth thickness and measuring pin measurement:

- The tooth thickness of racks is usually measured via the pin measurement as the tooth thickness could not be measured directly.
- A measuring pin is put into the teeth and measured to the back of the rack.
- So tooth thickness tolerances could be measured by measuring pin.

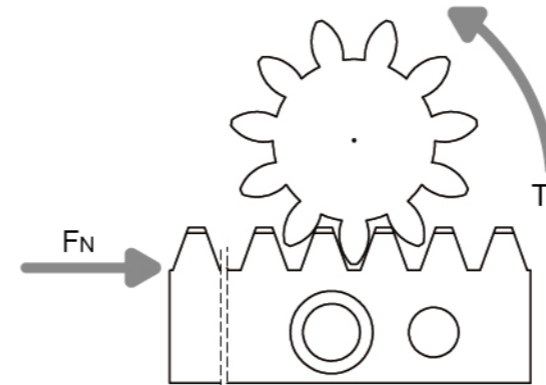


Pitch Error

- Single Pitch Error
- Total Pitch Error



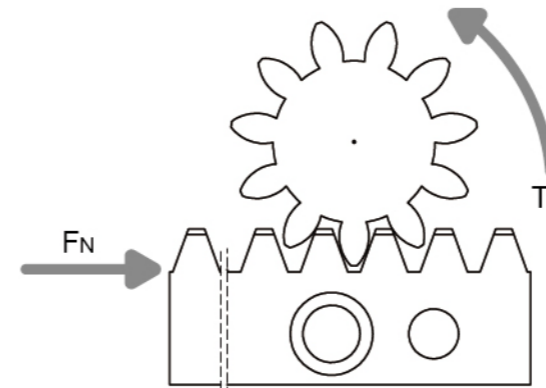
Load table SHF / SSF series



L₂: Teech breadth
p(mm): pitch
z: Number of teech

| Pitch | Module | Z | L ₂ | F _N [N] | T _N [Nm] |
|--------|--------|----|----------------|--------------------|---------------------|
| 3.142 | 1.0 | 20 | 15 | 386 | 3.9 |
| 4.712 | 1.5 | 16 | 20 | 532 | 6.4 |
| 4.712 | 1.5 | 20 | 20 | 668 | 10 |
| 6.283 | 2.0 | 16 | 20 | 845 | 14 |
| 6.283 | 2.0 | 20 | 20 | 1063 | 21 |
| 7.854 | 2.5 | 20 | 25 | 1601 | 40 |
| 9.425 | 3.0 | 16 | 30 | 1846 | 44 |
| 9.425 | 3.0 | 20 | 30 | 2326 | 70 |
| 12.566 | 4.0 | 20 | 40 | 4519 | 181 |
| 15.708 | 5.0 | 20 | 50 | 7606 | 380 |
| 18.850 | 6.0 | 20 | 60 | 11854 | 711 |
| 25.133 | 8.0 | 20 | 80 | 23103 | 1848 |

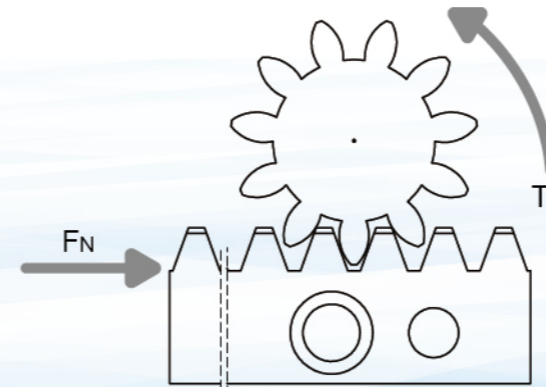
SSGH series



L₂: Teech breadth
p(mm): pitch
z: Number of teech

| Pitch | Module | Z | L ₂ | F _N [N] | T _N [Nm] |
|--------|--------|----|----------------|--------------------|---------------------|
| 3.142 | 1.0 | 25 | 9.5 | 970 | 12 |
| 4.712 | 1.5 | 16 | 20 | 2888 | 35 |
| 4.712 | 1.5 | 20 | 20 | 3638 | 55 |
| 6.283 | 2.0 | 16 | 20 | 4810 | 77 |
| 6.283 | 2.0 | 20 | 20 | 5958 | 119 |
| 7.854 | 2.5 | 20 | 25 | 9004 | 225 |
| 9.425 | 3.0 | 16 | 30 | 12597 | 302 |
| 9.425 | 3.0 | 20 | 30 | 13697 | 411 |
| 12.566 | 4.0 | 20 | 40 | 24068 | 963 |
| 15.708 | 5.0 | 20 | 50 | 37317 | 1866 |
| 18.850 | 6.0 | 20 | 60 | 52880 | 3173 |
| 25.133 | 8.0 | 20 | 80 | 91220 | 7298 |
| 31.416 | 10.0 | 16 | 100 | 137151 | 10972 |
| 31.416 | 10.0 | 20 | 100 | 138643 | 13864 |

SHGH series

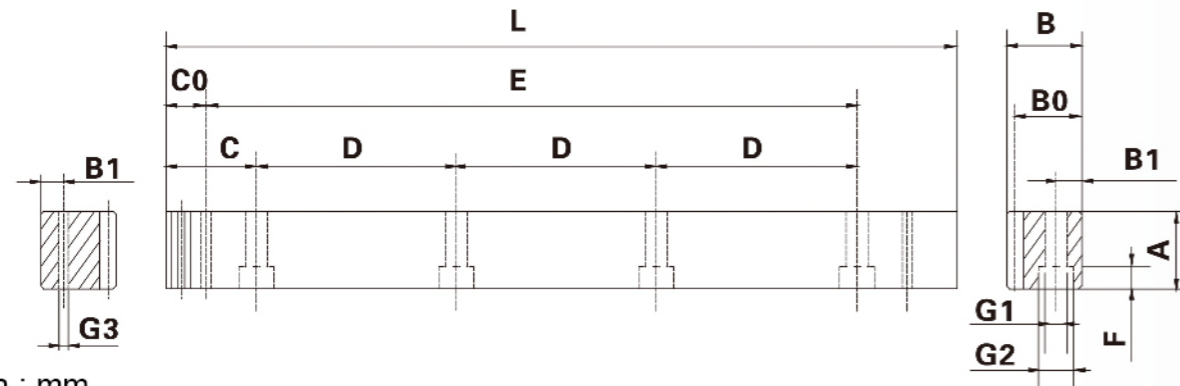


L₂: Teech breadth
p(mm): pitch
z: Number of teech

| PS | Module | Z | L ₂ | F _N [N] | T _N [Nm] |
|-------|--------|----|----------------|--------------------|---------------------|
| 5.00 | 1.5 | 16 | 20.0 | 3178 | 41 |
| 5.00 | 1.5 | 20 | 20.0 | 4237 | 67 |
| 6.66 | 2.0 | 16 | 20.0 | 5417 | 92 |
| 6.66 | 2.0 | 20 | 20.0 | 6528 | 139 |
| 8.33 | 2.5 | 20 | 25.0 | 10363 | 275 |
| 10.00 | 3.0 | 16 | 30.0 | 13589 | 346 |
| 10.00 | 3.0 | 20 | 30.0 | 15180 | 483 |
| 13.33 | 4.0 | 20 | 40.0 | 28394 | 1205 |
| 16.66 | 5.0 | 20 | 50.0 | 44963 | 2385 |
| 20.00 | 6.0 | 20 | 60.0 | 64990 | 4137 |
| 26.66 | 8.0 | 20 | 80.0 | 114380 | 9709 |
| 33.33 | 10.0 | 20 | 100.0 | 175005 | 18569 |
| 33.33 | 10.0 | 15 | 100.0 | 160516 | 12773 |

Quality Q5

SSGH / RSGH Series – Din 5 Rack



Dimension : mm

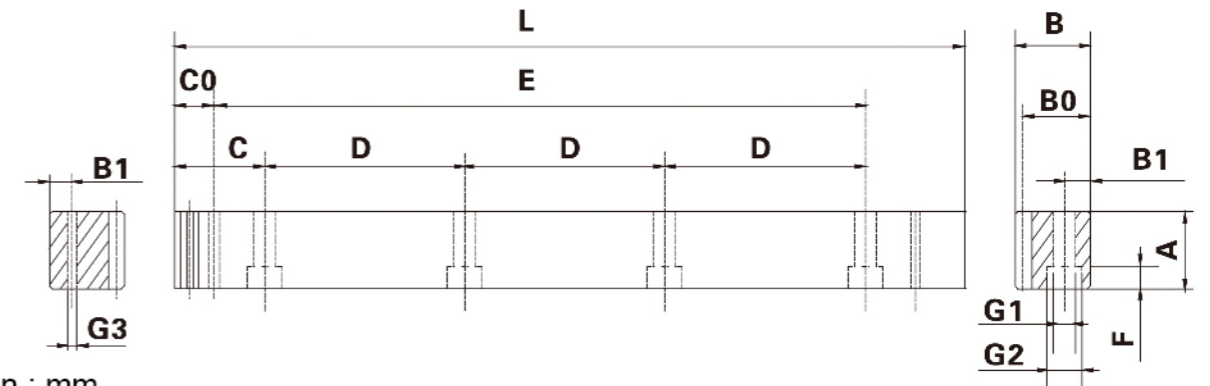
| Order Code | Module | N° of Teeth | L | A | B | B0 | C | D | N° of Holes | B1 | G1 | G2 | F | C0 | E | G3 |
|---------------------|--------|-------------|---------|----|----|------|-------|--------|-------------|----|----|-----|----|------|---------|------|
| SSGH / RSGH 1.51005 | 1.5 | 106 | 499.51 | 17 | 17 | 15.5 | 62.44 | 124.88 | 4 | 8 | 6 | 9.5 | 7 | 29.0 | 441.50 | 5.7 |
| SSGH / RSGH 1.51005 | 1.5 | 212 | 999.03 | 17 | 17 | 15.5 | 62.44 | 124.88 | 8 | 8 | 6 | 9.5 | 7 | 29.0 | 941.00 | 5.7 |
| SSGH / RSGH 020505 | 2.0 | 80 | 502.64 | 24 | 24 | 22 | 62.83 | 125.66 | 4 | 8 | 7 | 11 | 7 | 31.3 | 440.10 | 5.7 |
| SSGH / RSGH 021005 | 2.0 | 160 | 1005.28 | 24 | 24 | 22 | 62.83 | 125.66 | 8 | 8 | 7 | 11 | 7 | 31.3 | 942.70 | 5.7 |
| SSGH / RSGH 021505 | 2.0 | 240 | 1507.97 | 24 | 24 | 22 | 62.83 | 125.66 | 12 | 8 | 7 | 11 | 7 | 31.3 | 942.70 | 5.7 |
| SSGH / RSGH 022005 | 2.0 | 320 | 2010.62 | 24 | 24 | 22 | 62.83 | 125.66 | 16 | 8 | 7 | 11 | 7 | 31.3 | 1948.00 | 5.7 |
| SSGH / RSGH 030505 | 3.0 | 54 | 508.95 | 29 | 29 | 26 | 63.62 | 127.23 | 4 | 9 | 10 | 15 | 9 | 34.4 | 440.10 | 7.7 |
| SSGH / RSGH 031005 | 3.0 | 108 | 1017.90 | 29 | 29 | 26 | 63.62 | 127.23 | 8 | 9 | 10 | 15 | 9 | 34.4 | 949.10 | 7.7 |
| SSGH / RSGH 031505 | 3.0 | 162 | 1526.82 | 29 | 29 | 26 | 63.62 | 127.23 | 12 | 9 | 10 | 15 | 9 | 34.4 | 949.10 | 7.7 |
| SSGH / RSGH 032005 | 3.0 | 216 | 2035.75 | 29 | 29 | 26 | 63.62 | 127.23 | 16 | 9 | 10 | 15 | 9 | 34.4 | 1967.00 | 7.7 |
| SSGH / RSGH 040505 | 4.0 | 40 | 502.64 | 39 | 39 | 35 | 62.83 | 125.66 | 4 | 12 | 10 | 15 | 9 | 37.5 | 427.70 | 7.7 |
| SSGH / RSGH 041005 | 4.0 | 80 | 1005.28 | 39 | 39 | 35 | 62.83 | 125.66 | 8 | 12 | 10 | 15 | 9 | 37.5 | 930.30 | 7.7 |
| SSGH / RSGH 041505 | 4.0 | 120 | 1507.90 | 39 | 39 | 35 | 62.83 | 125.66 | 12 | 12 | 10 | 15 | 9 | 37.5 | 1432.90 | 7.7 |
| SSGH / RSGH 042005 | 4.0 | 160 | 2010.62 | 39 | 39 | 35 | 62.83 | 125.66 | 16 | 12 | 10 | 15 | 9 | 37.5 | 1935.60 | 7.7 |
| SSGH / RSGH 050505 | 5.0 | 32 | 502.65 | 49 | 39 | 34 | 62.83 | 125.66 | 4 | 12 | 14 | 20 | 13 | 30.1 | 442.40 | 11.7 |
| SSGH / RSGH 051005 | 5.0 | 64 | 1005.31 | 49 | 39 | 34 | 62.83 | 125.66 | 8 | 12 | 14 | 20 | 13 | 30.1 | 945.00 | 11.7 |
| SSGH / RSGH 060505 | 6.0 | 27 | 508.95 | 59 | 49 | 43 | 63.62 | 127.23 | 4 | 16 | 18 | 26 | 17 | 31.4 | 446.10 | 15.7 |
| SSGH / RSGH 061005 | 6.0 | 54 | 1017.90 | 59 | 49 | 43 | 63.62 | 127.23 | 8 | 16 | 18 | 26 | 17 | 31.4 | 955.00 | 15.7 |
| SSGH / RSGH 080505 | 8.0 | 20 | 502.64 | 79 | 79 | 71 | 62.83 | 125.66 | 4 | 25 | 22 | 33 | 21 | 26.6 | 449.50 | 19.7 |
| SSGH / RSGH 081005 | 8.0 | 40 | 1005.28 | 79 | 79 | 71 | 62.83 | 125.66 | 8 | 25 | 22 | 33 | 21 | 26.6 | 952.00 | 19.7 |

| | | | |
|----------------|---------------------------|--------------------------|--------------------|
| Quality | Din 5h22 | Hardness | 50°-55°HRC |
| Helical Angle | Straight | Teeth Treatment | Ground |
| Pressure Angle | 20° | Sides Surfaces Treatment | Ground |
| Material | SSGH=C45E RSGH=42CrMn4 | Heat Treatment | Induction-Hardened |

Total Pitch Error :
Gtf / 1000 ≤ 0.026 mm

Quality Q6

SSGH / RSGH Series – Din 6 Rack



Dimension : mm

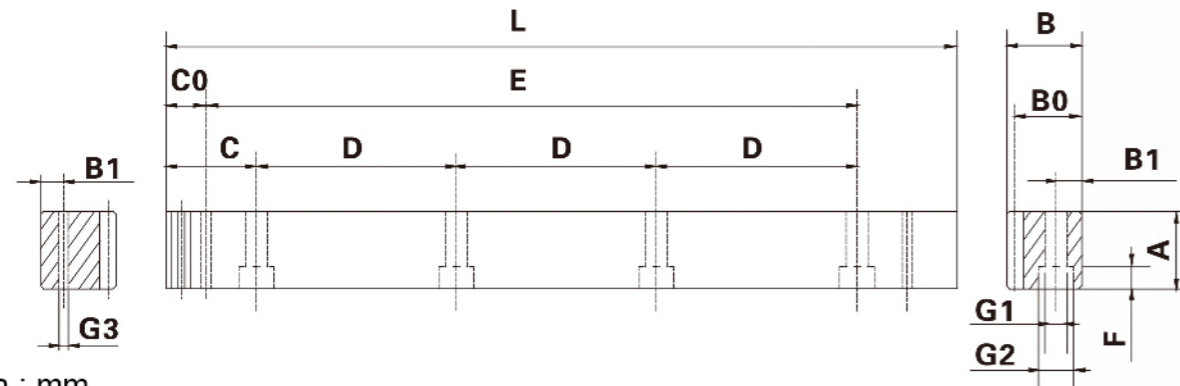
| Order Code | Module | N° of Teeth | L | A | B | B0 | C | D | N° of Holes | B1 | G1 | G2 | F | C0 | E | G3 |
|---------------------|--------|-------------|---------|----|----|------|-------|--------|-------------|----|----|-----|----|------|---------|------|
| SSGH / RSGH 1.50506 | 1.5 | 106 | 499.51 | 17 | 17 | 15.5 | 62.44 | 124.88 | 4 | 8 | 6 | 9.5 | 7 | 29.0 | 441.50 | 5.7 |
| SSGH / RSGH 1.51006 | 1.5 | 212 | 999.03 | 17 | 17 | 15.5 | 62.44 | 124.88 | 8 | 8 | 6 | 9.5 | 7 | 29.0 | 941.00 | 5.7 |
| SSGH / RSGH 020506 | 2.0 | 80 | 502.64 | 24 | 24 | 22 | 62.83 | 125.66 | 4 | 8 | 7 | 11 | 7 | 31.3 | 440.10 | 5.7 |
| SSGH / RSGH 021006 | 2.0 | 160 | 1005.28 | 24 | 24 | 22 | 62.83 | 125.66 | 8 | 8 | 7 | 11 | 7 | 31.3 | 942.70 | 5.7 |
| SSGH / RSGH 021506 | 2.0 | 240 | 1507.97 | 24 | 24 | 22 | 62.83 | 125.66 | 12 | 8 | 7 | 11 | 7 | 31.3 | 942.70 | 5.7 |
| SSGH / RSGH 022006 | 2.0 | 320 | 2010.62 | 24 | 24 | 22 | 62.83 | 125.66 | 16 | 8 | 7 | 11 | 7 | 31.3 | 1948.00 | 5.7 |
| SSGH / RSGH 030506 | 3.0 | 54 | 508.95 | 29 | 29 | 26 | 63.62 | 127.23 | 4 | 9 | 10 | 15 | 9 | 34.4 | 440.10 | 7.7 |
| SSGH / RSGH 031006 | 3.0 | 108 | 1017.90 | 29 | 29 | 26 | 63.62 | 127.23 | 8 | 9 | 10 | 15 | 9 | 34.4 | 949.10 | 7.7 |
| SSGH / RSGH 031506 | 3.0 | 162 | 1526.82 | 29 | 29 | 26 | 63.62 | 127.23 | 12 | 9 | 10 | 15 | 9 | 34.4 | 949.10 | 7.7 |
| SSGH / RSGH 032006 | 3.0 | 216 | 2035.75 | 29 | 29 | 26 | 63.62 | 127.23 | 16 | 9 | 10 | 15 | 9 | 34.4 | 1967.00 | 7.7 |
| SSGH / RSGH 040506 | 4.0 | 40 | 502.64 | 39 | 39 | 35 | 62.83 | 125.66 | 4 | 12 | 10 | 15 | 9 | 37.5 | 427.70 | 7.7 |
| SSGH / RSGH 041006 | 4.0 | 80 | 1005.28 | 39 | 39 | 35 | 62.83 | 125.66 | 8 | 12 | 10 | 15 | 9 | 37.5 | 930.30 | 7.7 |
| SSGH / RSGH 041506 | 4.0 | 120 | 1507.90 | 39 | 39 | 35 | 62.83 | 125.66 | 12 | 12 | 10 | 15 | 9 | 37.5 | 1432.90 | 7.7 |
| SSGH / RSGH 042006 | 4.0 | 160 | 2010.62 | 39 | 39 | 35 | 62.83 | 125.66 | 16 | 12 | 10 | 15 | 9 | 37.5 | 1935.60 | 7.7 |
| SSGH / RSGH 050506 | 5.0 | 32 | 502.65 | 49 | 39 | 34 | 62.83 | 125.66 | 4 | 12 | 14 | 20 | 13 | 30.1 | 442.40 | 11.7 |
| SSGH / RSGH 051006 | 5.0 | 64 | 1005.31 | 49 | 39 | 34 | 62.83 | 125.66 | 8 | 12 | 14 | 20 | 13 | 30.1 | 945.00 | 11.7 |
| SSGH / RSGH 060506 | 6.0 | 27 | 508.95 | 59 | 49 | 43 | 63.62 | 127.23 | 4 | 16 | 18 | 26 | 17 | 31.4 | 446.10 | 15.7 |
| SSGH / RSGH 061006 | 6.0 | 54 | 1017.90 | 59 | 49 | 43 | 63.62 | 127.23 | 8 | 16 | 18 | 26 | 17 | 31.4 | 955.00 | 15.7 |
| SSGH / RSGH 080506 | 8.0 | 20 | 502.64 | 79 | 79 | 71 | 62.83 | 125.66 | 4 | 25 | 22 | 33 | 21 | 26.6 | 449.50 | 19.7 |
| SSGH / RSGH 081006 | 8.0 | 40 | 1005.28 | 79 | 79 | 71 | 62.83 | 125.66 | 8 | 25 | 22 | 33 | 21 | 26.6 | 952.00 | 19.7 |

| | | | |
|----------------|---------------------------|--------------------------|--------------------|
| Quality | Din 6h25 | Hardness | 50°-55°HRC |
| Helical Angle | Straight | Teeth Treatment | Ground |
| Pressure Angle | 20° | Sides Surfaces Treatment | Ground |
| Material | SSGH=C45E RSGH=42CrMn4 | Heat Treatment | Induction-Hardened |

Total Pitch Error :
Gtf / 1000 ≤ 0.036 mm
Gtf / 1500 ≤ 0.043 mm (≤ 0.029 / 1000mm)
Gtf / 2000 ≤ 0.047 mm (≤ 0.024 / 1000mm)

Quality Q7

SSFQ / RSFQ Series – Din 7 Rack



Dimension : mm

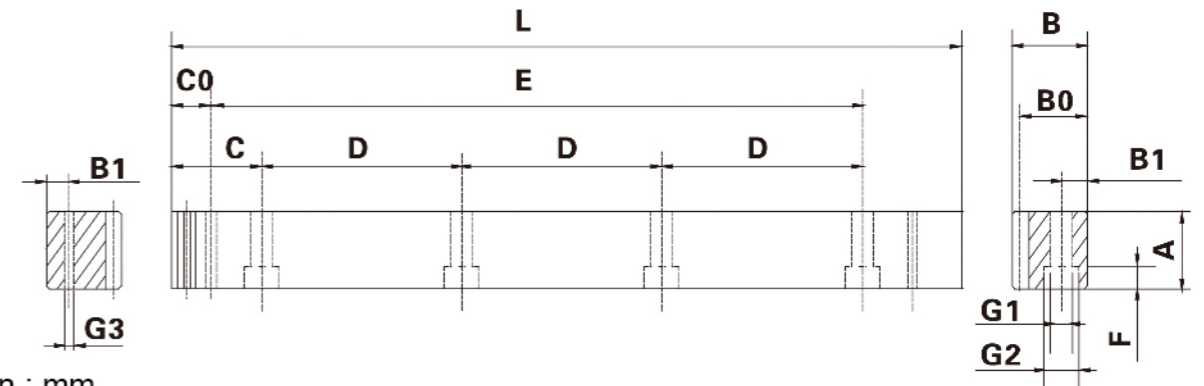
| Order Code | Module | N° of Teeth | L | A | B | B0 | C | D | N° of Holes | B1 | G1 | G2 | F | C0 | E | G3 |
|---------------------|--------|-------------|---------|----|----|------|-------|--------|-------------|----|----|-----|----|------|---------|------|
| SSFQ / RSFQ 1.50507 | 1.5 | 106 | 499.51 | 17 | 17 | 15.5 | 62.44 | 124.88 | 4 | 8 | 6 | 9.5 | 7 | 29.0 | 441.50 | 5.7 |
| SSFQ / RSFQ 1.51007 | 1.5 | 212 | 999.03 | 17 | 17 | 15.5 | 62.44 | 124.88 | 8 | 8 | 6 | 9.5 | 7 | 29.0 | 941.00 | 5.7 |
| SSFQ / RSFQ 020507 | 2.0 | 80 | 502.64 | 25 | 24 | 22 | 62.83 | 125.66 | 4 | 8 | 7 | 11 | 7 | 31.3 | 440.10 | 5.7 |
| SSFQ / RSFQ 021007 | 2.0 | 160 | 1005.28 | 25 | 24 | 22 | 62.83 | 125.66 | 8 | 8 | 7 | 11 | 7 | 31.3 | 942.70 | 5.7 |
| SSFQ / RSFQ 021507 | 2.0 | 240 | 1507.97 | 25 | 24 | 22 | 62.83 | 125.66 | 12 | 8 | 7 | 11 | 7 | 31.3 | 942.70 | 5.7 |
| SSFQ / RSFQ 022007 | 2.0 | 320 | 2010.62 | 25 | 24 | 22 | 62.83 | 125.66 | 16 | 8 | 7 | 11 | 7 | 31.3 | 1948.00 | 5.7 |
| SSFQ / RSFQ 030507 | 3.0 | 54 | 508.95 | 30 | 29 | 26 | 63.62 | 127.23 | 4 | 9 | 10 | 15 | 9 | 34.4 | 440.10 | 7.7 |
| SSFQ / RSFQ 031007 | 3.0 | 108 | 1017.90 | 30 | 29 | 26 | 63.62 | 127.23 | 8 | 9 | 10 | 15 | 9 | 34.4 | 949.10 | 7.7 |
| SSFQ / RSFQ 031507 | 3.0 | 162 | 1526.82 | 30 | 29 | 26 | 63.62 | 127.23 | 12 | 9 | 10 | 15 | 9 | 34.4 | 949.10 | 7.7 |
| SSFQ / RSFQ 032006 | 3.0 | 216 | 2035.75 | 30 | 29 | 26 | 63.62 | 127.23 | 16 | 9 | 10 | 15 | 9 | 34.4 | 1967.00 | 7.7 |
| SSFQ / RSFQ 040506 | 4.0 | 40 | 502.64 | 40 | 39 | 35 | 62.83 | 125.66 | 4 | 12 | 10 | 15 | 9 | 37.5 | 427.70 | 7.7 |
| SSFQ / RSFQ 041006 | 4.0 | 80 | 1005.28 | 40 | 39 | 35 | 62.83 | 125.66 | 8 | 12 | 10 | 15 | 9 | 37.5 | 930.30 | 7.7 |
| SSFQ / RSFQ 041506 | 4.0 | 120 | 1507.90 | 40 | 39 | 35 | 62.83 | 125.66 | 12 | 12 | 10 | 15 | 9 | 37.5 | 1432.90 | 7.7 |
| SSFQ / RSFQ 042006 | 4.0 | 160 | 2010.62 | 40 | 39 | 35 | 62.83 | 125.66 | 16 | 12 | 10 | 15 | 9 | 37.5 | 1935.60 | 7.7 |
| SSFQ / RSFQ 050506 | 5.0 | 32 | 502.65 | 50 | 39 | 34 | 62.83 | 125.66 | 4 | 12 | 14 | 20 | 13 | 30.1 | 442.40 | 11.7 |
| SSFQ / RSFQ 051006 | 5.0 | 64 | 1005.31 | 50 | 39 | 34 | 62.83 | 125.66 | 8 | 12 | 14 | 20 | 13 | 30.1 | 945.00 | 11.7 |
| SSFQ / RSFQ 060506 | 6.0 | 27 | 508.95 | 59 | 49 | 43 | 63.62 | 127.23 | 4 | 16 | 18 | 26 | 17 | 31.4 | 446.10 | 15.7 |
| SSFQ / RSFQ 061006 | 6.0 | 54 | 1017.90 | 59 | 49 | 43 | 63.62 | 127.23 | 8 | 16 | 18 | 26 | 17 | 31.4 | 955.00 | 15.7 |
| SSFQ / RSFQ 080506 | 8.0 | 20 | 502.64 | 79 | 79 | 71 | 62.83 | 125.66 | 4 | 25 | 22 | 33 | 21 | 26.6 | 449.50 | 19.7 |
| SSFQ / RSFQ 081006 | 8.0 | 40 | 1005.28 | 79 | 79 | 71 | 62.83 | 125.66 | 8 | 25 | 22 | 33 | 21 | 26.6 | 952.00 | 19.7 |

| | | | |
|----------------|---------------------------|--------------------------|------------|
| Quality | Din 7e25 | Hardness | 15°-20°HRC |
| Helical Angle | Straight | Teeth Treatment | Ground |
| Pressure Angle | 20° | Sides Surfaces Treatment | Milled |
| Material | SSFQ=C45E RSFQ=42CrMn4 | Heat Treatment | Quenched |

Total Pitch Error :
Gtf / 1000 ≤ 0.052 mm

Quality Q8

SSFQ / RSFQ Series – Din 8 Rack



Dimension : mm

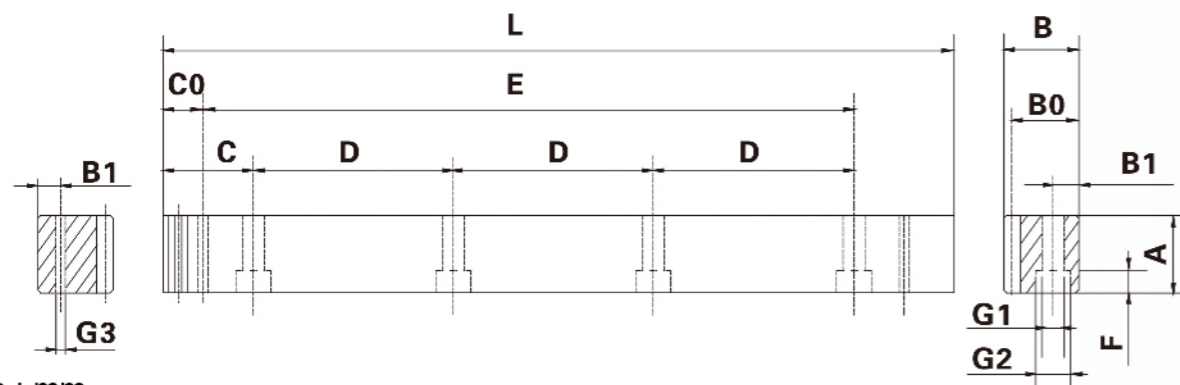
| Order Code | Module | N° of Teeth | L | A | B | B0 | C | D | N° of Holes | B1 | G1 | G2 | F | C0 | E | G3 |
|---------------------|--------|-------------|---------|----|----|------|-------|--------|-------------|----|----|-----|----|------|---------|------|
| SSFQ / RSFQ 1.50508 | 1.5 | 106 | 499.51 | 17 | 17 | 15.5 | 62.44 | 124.88 | 4 | 8 | 6 | 9.5 | 7 | 29.0 | 441.50 | 5.7 |
| SSFQ / RSFQ 1.51008 | 1.5 | 212 | 999.03 | 17 | 17 | 15.5 | 62.44 | 124.88 | 8 | 8 | 6 | 9.5 | 7 | 29.0 | 941.00 | 5.7 |
| SSFQ / RSFQ 020508 | 2.0 | 80 | 502.64 | 25 | 24 | 22 | 62.83 | 125.66 | 4 | 8 | 7 | 11 | 7 | 31.3 | 440.10 | 5.7 |
| SSFQ / RSFQ 021008 | 2.0 | 160 | 1005.28 | 25 | 24 | 22 | 62.83 | 125.66 | 8 | 8 | 7 | 11 | 7 | 31.3 | 942.70 | 5.7 |
| SSFQ / RSFQ 021508 | 2.0 | 240 | 1507.97 | 25 | 24 | 22 | 62.83 | 125.66 | 12 | 8 | 7 | 11 | 7 | 31.3 | 942.70 | 5.7 |
| SSFQ / RSFQ 022008 | 2.0 | 320 | 2010.62 | 25 | 24 | 22 | 62.83 | 125.66 | 16 | 8 | 7 | 11 | 7 | 31.3 | 1948.00 | 5.7 |
| SSFQ / RSFQ 030508 | 3.0 | 54 | 508.95 | 30 | 29 | 26 | 63.62 | 127.23 | 4 | 9 | 10 | 15 | 9 | 34.4 | 440.10 | 7.7 |
| SSFQ / RSFQ 031008 | 3.0 | 108 | 1017.90 | 30 | 29 | 26 | 63.62 | 127.23 | 8 | 9 | 10 | 15 | 9 | 34.4 | 949.10 | 7.7 |
| SSFQ / RSFQ 031508 | 3.0 | 162 | 1526.82 | 30 | 29 | 26 | 63.62 | 127.23 | 12 | 9 | 10 | 15 | 9 | 34.4 | 949.10 | 7.7 |
| SSFQ / RSFQ 032008 | 3.0 | 216 | 2035.75 | 30 | 29 | 26 | 63.62 | 127.23 | 16 | 9 | 10 | 15 | 9 | 34.4 | 1967.00 | 7.7 |
| SSFQ / RSFQ 040508 | 4.0 | 40 | 502.64 | 40 | 39 | 35 | 62.83 | 125.66 | 4 | 12 | 10 | 15 | 9 | 37.5 | 427.70 | 7.7 |
| SSFQ / RSFQ 041008 | 4.0 | 80 | 1005.28 | 40 | 39 | 35 | 62.83 | 125.66 | 8 | 12 | 10 | 15 | 9 | 37.5 | 930.30 | 7.7 |
| SSFQ / RSFQ 041508 | 4.0 | 120 | 1507.90 | 40 | 39 | 35 | 62.83 | 125.66 | 12 | 12 | 10 | 15 | 9 | 37.5 | 1432.90 | 7.7 |
| SSFQ / RSFQ 042008 | 4.0 | 160 | 2010.62 | 40 | 39 | 35 | 62.83 | 125.66 | 16 | 12 | 10 | 15 | 9 | 37.5 | 1935.60 | 7.7 |
| SSFQ / RSFQ 050508 | 5.0 | 32 | 502.65 | 50 | 39 | 34 | 62.83 | 125.66 | 4 | 12 | 14 | 20 | 13 | 30.1 | 442.40 | 11.7 |
| SSFQ / RSFQ 051008 | 5.0 | 64 | 1005.31 | 50 | 39 | 34 | 62.83 | 125.66 | 8 | 12 | 14 | 20 | 13 | 30.1 | 945.00 | 11.7 |
| SSFQ / RSFQ 060508 | 6.0 | 27 | 508.95 | 59 | 49 | 43 | 63.62 | 127.23 | 4 | 16 | 18 | 26 | 17 | 31.4 | 446.10 | 15.7 |
| SSFQ / RSFQ 061008 | 6.0 | 54 | 1017.90 | 59 | 49 | 43 | 63.62 | 127.23 | 8 | 16 | 18 | 26 | 17 | 31.4 | 955.00 | 15.7 |
| SSFQ / RSFQ 080508 | 8.0 | 20 | 502.64 | 79 | 79 | 71 | 62.83 | 125.66 | 4 | 25 | 22 | 33 | 21 | 26.6 | 449.50 | 19.7 |
| SSFQ / RSFQ 081008 | 8.0 | 40 | 1005.28 | 79 | 79 | 71 | 62.83 | 125.66 | 8 | 25 | 22 | 33 | 21 | 26.6 | 952.00 | 19.7 |

| | | | |
|----------------|---------------------------|--------------------------|------------|
| Quality | Din 8e27 | Hardness | 15°-20°HRC |
| Helical Angle | Straight | Teeth Treatment | Milled |
| Pressure Angle | 20° | Sides Surfaces Treatment | Milled |
| Material | SSFQ=C45E RSFQ=42CrMn4 | Heat Treatment | Quenched |

Total Pitch Error :
Gtf / 1000 ≤ 0.100 mm
Gtf / 2000 ≤ 0.200 mm

Quality Q9

SSF Series – Din 9 Rack



Dimension : mm

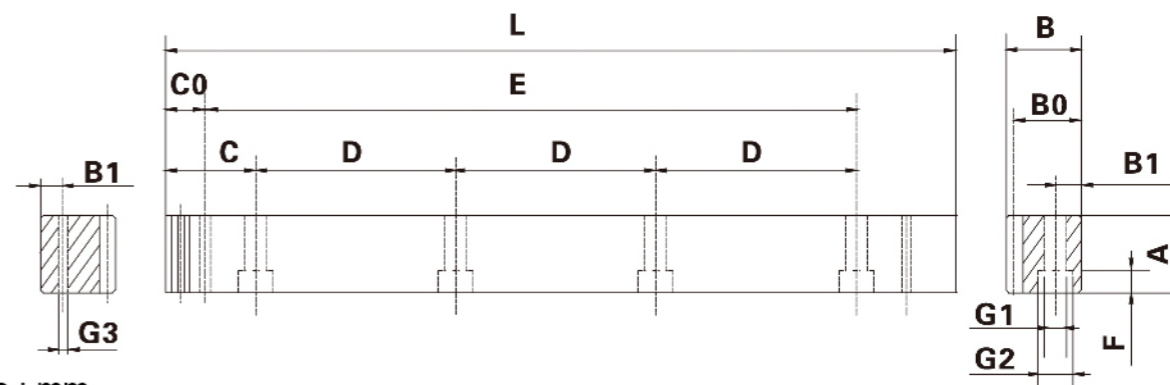
| Order Code | Module | N° of Teeth | L | A | B | B0 | C | D | N° of Holes | B1 | G1 | G2 | F | C0 | E | G3 |
|-------------|--------|-------------|---------|----|----|------|-------|--------|-------------|----|----|-----|----|------|---------|------|
| SSF 1.50509 | 1.5 | 106 | 499.51 | 17 | 17 | 15.5 | 62.44 | 124.88 | 4 | 8 | 6 | 9.5 | 7 | 29.0 | 441.50 | 5.7 |
| SSF 1.51009 | 1.5 | 212 | 999.03 | 17 | 17 | 15.5 | 62.44 | 124.88 | 8 | 8 | 6 | 9.5 | 7 | 29.0 | 941.00 | 5.7 |
| SSF 020509 | 2.0 | 80 | 502.64 | 24 | 24 | 22 | 62.83 | 125.66 | 4 | 8 | 7 | 11 | 7 | 31.3 | 440.10 | 5.7 |
| SSF 021009 | 2.0 | 160 | 1005.28 | 24 | 24 | 22 | 62.83 | 125.66 | 8 | 8 | 7 | 11 | 7 | 31.3 | 942.70 | 5.7 |
| SSF 021509 | 2.0 | 240 | 1507.97 | 24 | 24 | 22 | 62.83 | 125.66 | 12 | 8 | 7 | 11 | 7 | 31.3 | 942.70 | 5.7 |
| SSF 022009 | 2.0 | 320 | 2010.62 | 24 | 24 | 22 | 62.83 | 125.66 | 16 | 8 | 7 | 11 | 7 | 31.3 | 1948.00 | 5.7 |
| SSF 030509 | 3.0 | 54 | 508.95 | 29 | 29 | 26 | 63.62 | 127.23 | 4 | 9 | 10 | 15 | 9 | 34.4 | 440.10 | 7.7 |
| SSF 031009 | 3.0 | 108 | 1017.90 | 29 | 29 | 26 | 63.62 | 127.23 | 8 | 9 | 10 | 15 | 9 | 34.4 | 949.10 | 7.7 |
| SSF 031509 | 3.0 | 162 | 1526.82 | 29 | 29 | 26 | 63.62 | 127.23 | 12 | 9 | 10 | 15 | 9 | 34.4 | 949.10 | 7.7 |
| SSF 032009 | 3.0 | 216 | 2035.75 | 29 | 29 | 26 | 63.62 | 127.23 | 16 | 9 | 10 | 15 | 9 | 34.4 | 1967.00 | 7.7 |
| SSF 040509 | 4.0 | 40 | 502.64 | 39 | 39 | 35 | 62.83 | 125.66 | 4 | 12 | 10 | 15 | 9 | 37.5 | 427.70 | 7.7 |
| SSF 041009 | 4.0 | 80 | 1005.28 | 39 | 39 | 35 | 62.83 | 125.66 | 8 | 12 | 10 | 15 | 9 | 37.5 | 930.30 | 7.7 |
| SSF 041509 | 4.0 | 120 | 1507.90 | 39 | 39 | 35 | 62.83 | 125.66 | 12 | 12 | 10 | 15 | 9 | 37.5 | 1432.90 | 7.7 |
| SSF 042009 | 4.0 | 160 | 2010.62 | 39 | 39 | 35 | 62.83 | 125.66 | 16 | 12 | 10 | 15 | 9 | 37.5 | 1935.60 | 7.7 |
| SSF 050509 | 5.0 | 32 | 502.65 | 49 | 39 | 34 | 62.83 | 125.66 | 4 | 12 | 14 | 20 | 13 | 30.1 | 442.40 | 11.7 |
| SSF 051009 | 5.0 | 64 | 1005.31 | 49 | 39 | 34 | 62.83 | 125.66 | 8 | 12 | 14 | 20 | 13 | 30.1 | 945.00 | 11.7 |
| SSF 060509 | 6.0 | 27 | 508.95 | 59 | 49 | 43 | 63.62 | 127.23 | 4 | 16 | 18 | 26 | 17 | 31.4 | 446.10 | 15.7 |
| SSF 061009 | 6.0 | 54 | 1017.90 | 59 | 49 | 43 | 63.62 | 127.23 | 8 | 16 | 18 | 26 | 17 | 31.4 | 955.00 | 15.7 |
| SSF 080509 | 8.0 | 20 | 502.64 | 79 | 79 | 71 | 62.83 | 125.66 | 4 | 25 | 22 | 33 | 21 | 26.6 | 449.50 | 19.7 |
| SSF 081009 | 8.0 | 40 | 1005.28 | 79 | 79 | 71 | 62.83 | 125.66 | 8 | 25 | 22 | 33 | 21 | 26.6 | 952.00 | 19.7 |

| | | | |
|----------------|----------|--------------------------|------------------|
| Quality | Din 9e27 | Hardness | Less than 15°HRC |
| Helical Angle | Straight | Teeth Treatment | Milled |
| Pressure Angle | 20° | Sides Surfaces Treatment | Milled |
| Material | SSF=C45E | Heat Treatment | None |

Total Pitch Error :
Gtf / 1000 ≤ 0.150 mm

Quality Q10

SSFH / RSFH Series – Din 10 Rack



Dimension : mm

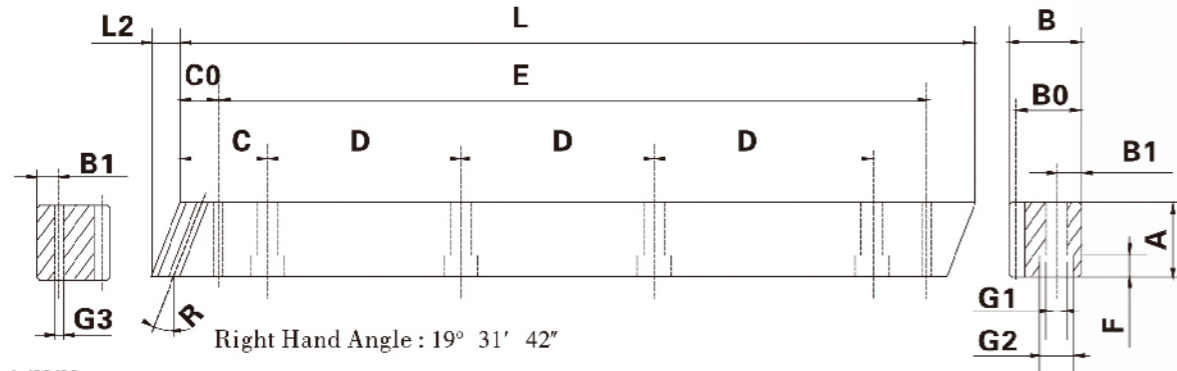
| Order Code | Module | N° of Teeth | L | A | B | B0 | C | D | N° of Holes | B1 | G1 | G2 | F | C0 | E | G3 |
|---------------------|--------|-------------|---------|----|----|------|-------|--------|-------------|----|----|-----|----|------|---------|------|
| SSFH / RSFH 1.50510 | 1.5 | 106 | 499.51 | 17 | 17 | 15.5 | 62.44 | 124.88 | 4 | 8 | 6 | 9.5 | 7 | 29.0 | 441.50 | 5.7 |
| SSFH / RSFH 1.51010 | 1.5 | 212 | 999.03 | 17 | 17 | 15.5 | 62.44 | 124.88 | 8 | 8 | 6 | 9.5 | 7 | 29.0 | 941.00 | 5.7 |
| SSFH / RSFH 020510 | 2.0 | 80 | 502.64 | 24 | 24 | 22 | 62.83 | 125.66 | 4 | 8 | 7 | 11 | 7 | 31.3 | 440.10 | 5.7 |
| SSFH / RSFH 021010 | 2.0 | 160 | 1005.28 | 24 | 24 | 22 | 62.83 | 125.66 | 8 | 8 | 7 | 11 | 7 | 31.3 | 942.70 | 5.7 |
| SSFH / RSFH 021510 | 2.0 | 240 | 1507.97 | 24 | 24 | 22 | 62.83 | 125.66 | 12 | 8 | 7 | 11 | 7 | 31.3 | 942.70 | 5.7 |
| SSFH / RSFH 022010 | 2.0 | 320 | 2010.62 | 24 | 24 | 22 | 62.83 | 125.66 | 16 | 8 | 7 | 11 | 7 | 31.3 | 1948.00 | 5.7 |
| SSFH / RSFH 030510 | 3.0 | 54 | 508.95 | 29 | 29 | 26 | 63.62 | 127.23 | 4 | 9 | 10 | 15 | 9 | 34.4 | 440.10 | 7.7 |
| SSFH / RSFH 031010 | 3.0 | 108 | 1017.90 | 29 | 29 | 26 | 63.62 | 127.23 | 8 | 9 | 10 | 15 | 9 | 34.4 | 949.10 | 7.7 |
| SSFH / RSFH 031510 | 3.0 | 162 | 1526.82 | 29 | 29 | 26 | 63.62 | 127.23 | 12 | 9 | 10 | 15 | 9 | 34.4 | 949.10 | 7.7 |
| SSFH / RSFH 032010 | 3.0 | 216 | 2035.75 | 29 | 29 | 26 | 63.62 | 127.23 | 16 | 9 | 10 | 15 | 9 | 34.4 | 1967.00 | 7.7 |
| SSFH / RSFH 040510 | 4.0 | 40 | 502.64 | 39 | 39 | 35 | 62.83 | 125.66 | 4 | 12 | 10 | 15 | 9 | 37.5 | 427.70 | 7.7 |
| SSFH / RSFH 041010 | 4.0 | 80 | 1005.28 | 39 | 39 | 35 | 62.83 | 125.66 | 8 | 12 | 10 | 15 | 9 | 37.5 | 930.30 | 7.7 |
| SSFH / RSFH 041510 | 4.0 | 120 | 1507.90 | 39 | 39 | 35 | 62.83 | 125.66 | 12 | 12 | 10 | 15 | 9 | 37.5 | 1432.90 | 7.7 |
| SSFH / RSFH 042010 | 4.0 | 160 | 2010.62 | 39 | 39 | 35 | 62.83 | 125.66 | 16 | 12 | 10 | 15 | 9 | 37.5 | 1935.60 | 7.7 |
| SSFH / RSFH 050510 | 5.0 | 32 | 502.65 | 49 | 39 | 34 | 62.83 | 125.66 | 4 | 12 | 14 | 20 | 13 | 30.1 | 442.40 | 11.7 |
| SSFH / RSFH 051010 | 5.0 | 64 | 1005.31 | 49 | 39 | 34 | 62.83 | 125.66 | 8 | 12 | 14 | 20 | 13 | 30.1 | 945.00 | 11.7 |
| SSFH / RSFH 060509 | 6.0 | 27 | 508.95 | 59 | 49 | 43 | 63.62 | 127.23 | 4 | 16 | 18 | 26 | 17 | 31.4 | 446.10 | 15.7 |
| SSFH / RSFH 061009 | 6.0 | 54 | 1017.90 | 59 | 49 | 43 | 63.62 | 127.23 | 8 | 16 | 18 | 26 | 17 | 31.4 | 955.00 | 15.7 |
| SSFH / RSFH 080509 | 8.0 | 20 | 502.64 | 79 | 79 | 71 | 62.83 | 125.66 | 4 | 25 | 22 | 33 | 21 | 26.6 | 449.50 | 19.7 |
| SSFH / RSFH 081009 | 8.0 | 40 | 1005.28 | 79 | 79 | 71 | 62.83 | 125.66 | 8 | 25 | 22 | 33 | 21 | 26.6 | 952.00 | 19.7 |

| | | | |
|----------------|---------------------------|--------------------------|--------------------|
| Quality | Din 10e27 | Hardness | 15°-55°HRC |
| Helical Angle | Straight | Teeth Treatment | Milled |
| Pressure Angle | 20° | Sides Surfaces Treatment | Milled |
| Material | SSFH=C45E RSFH=42CrMn4 | Heat Treatment | Induction Hardened |

Total Pitch Error :
Gtf / 1000 ≤ 0.200 mm

Quality Q5

SHGH / RHGH Series – Din 5 Rack



Dimension : mm

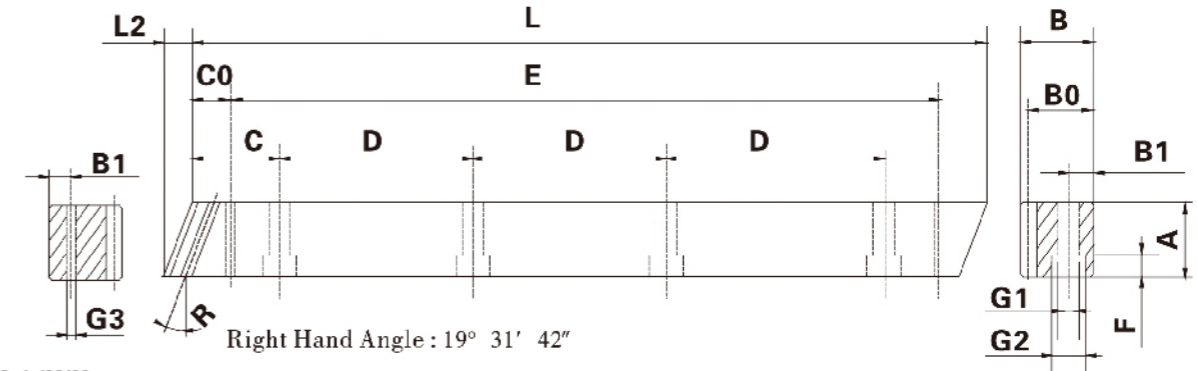
| Order Code | Module | N° of Teeth | L | L2 | A | B | B0 | C | D | N° of Holes | B1 | G1 | G2 | F | C0 | E | G3 |
|---------------------|--------|-------------|---------|-------|----|----|------|-------|-----|-------------|----|----|-----|----|-------|---------|------|
| SHGH / RHGH 1.50505 | 1.5 | 100 | 500.00 | 6.00 | 17 | 17 | 15.5 | 62.50 | 125 | 4 | 8 | 6 | 9.5 | 7 | 31.7 | 436.60 | 5.7 |
| SHGH / RHGH 1.51005 | 1.5 | 200 | 1000.00 | 6.00 | 17 | 17 | 15.5 | 62.50 | 125 | 8 | 8 | 6 | 9.5 | 7 | 31.7 | 936.60 | 5.7 |
| SHGH / RHGH 020505 | 2.0 | 75 | 500.00 | 8.50 | 24 | 24 | 22 | 62.50 | 125 | 4 | 8 | 7 | 11 | 7 | 31.7 | 436.60 | 5.7 |
| SHGH / RHGH 021005 | 2.0 | 150 | 1000.00 | 8.50 | 24 | 24 | 22 | 62.50 | 125 | 8 | 8 | 7 | 11 | 7 | 31.7 | 936.60 | 5.7 |
| SHGH / RHGH 021505 | 2.0 | 225 | 1500.00 | 8.50 | 24 | 24 | 22 | 62.50 | 125 | 12 | 8 | 7 | 11 | 7 | 31.7 | 1436.60 | 5.7 |
| SHGH / RHGH 022005 | 2.0 | 300 | 2000.00 | 8.50 | 24 | 24 | 22 | 62.50 | 125 | 16 | 8 | 7 | 11 | 7 | 31.7 | 1936.60 | 5.7 |
| SHGH / RHGH 030505 | 3.0 | 50 | 500.00 | 10.30 | 29 | 29 | 26 | 62.50 | 125 | 4 | 9 | 10 | 15 | 9 | 35.0 | 430.00 | 7.7 |
| SHGH / RHGH 031005 | 3.0 | 100 | 1000.00 | 10.30 | 29 | 29 | 26 | 62.50 | 125 | 8 | 9 | 10 | 15 | 9 | 35.0 | 930.00 | 7.7 |
| SHGH / RHGH 031505 | 3.0 | 150 | 1500.00 | 10.30 | 29 | 29 | 26 | 62.50 | 125 | 12 | 9 | 10 | 15 | 9 | 35.0 | 1430.00 | 7.7 |
| SHGH / RHGH 032005 | 3.0 | 200 | 2000.00 | 10.30 | 29 | 29 | 26 | 62.50 | 125 | 16 | 9 | 10 | 15 | 9 | 35.0 | 1930.00 | 7.7 |
| SHGH / RHGH 040505 | 4.0 | 38 | 506.67 | 13.80 | 39 | 39 | 35 | 62.50 | 125 | 4 | 12 | 10 | 15 | 9 | 33.3 | 433.00 | 7.7 |
| SHGH / RHGH 041005 | 4.0 | 75 | 1000.00 | 13.80 | 39 | 39 | 35 | 62.50 | 125 | 8 | 12 | 10 | 15 | 9 | 33.3 | 933.40 | 7.7 |
| SHGH / RHGH 041505 | 4.0 | 113 | 1506.67 | 13.80 | 39 | 39 | 35 | 62.50 | 125 | 12 | 12 | 10 | 15 | 9 | 33.3 | 1440.10 | 7.7 |
| SHGH / RHGH 042005 | 4.0 | 150 | 2000.00 | 13.80 | 39 | 39 | 35 | 62.50 | 125 | 16 | 12 | 10 | 15 | 9 | 33.3 | 1933.40 | 7.7 |
| SHGH / RHGH 050505 | 5.0 | 30 | 500.00 | 17.40 | 49 | 39 | 34 | 62.50 | 125 | 4 | 12 | 14 | 20 | 13 | 37.5 | 425.00 | 11.7 |
| SHGH / RHGH 051005 | 5.0 | 60 | 1000.00 | 17.40 | 49 | 39 | 34 | 62.50 | 125 | 8 | 12 | 14 | 20 | 13 | 37.5 | 925.00 | 11.7 |
| SHGH / RHGH 060505 | 6.0 | 25 | 500.00 | 20.90 | 59 | 49 | 43 | 62.50 | 125 | 4 | 16 | 18 | 26 | 17 | 37.5 | 425.00 | 15.7 |
| SHGH / RHGH 061005 | 6.0 | 50 | 1000.00 | 20.90 | 59 | 49 | 43 | 62.50 | 125 | 8 | 16 | 18 | 26 | 17 | 37.5 | 925.00 | 15.7 |
| SHGH / RHGH 080505 | 8.0 | 18 | 480.00 | 28.00 | 79 | 79 | 71 | 60.00 | 120 | 4 | 25 | 22 | 33 | 21 | 120.0 | 240.00 | 17.7 |
| SHGH / RHGH 081005 | 8.0 | 36 | 960.00 | 28.00 | 79 | 79 | 71 | 60.00 | 120 | 8 | 25 | 22 | 33 | 21 | 120.0 | 720.00 | 17.7 |

| | | | |
|----------------|---------------------------|--------------------------|--------------------|
| Quality | Din 5h22 | Hardness | 50°-55°HRC |
| Helical Angle | RH 19° 31' 42" | Teeth Treatment | Ground |
| Pressure Angle | 20° | Sides Surfaces Treatment | Ground |
| Material | SHGH=C45E RHGH=42CrMn4 | Heat Treatment | Induction-Hardened |

Total Pitch Error :
Gtf / 1000 ≤ 0.026 mm

Quality Q6

SHGH / RHGH Series – Din 6 Rack



Dimension : mm

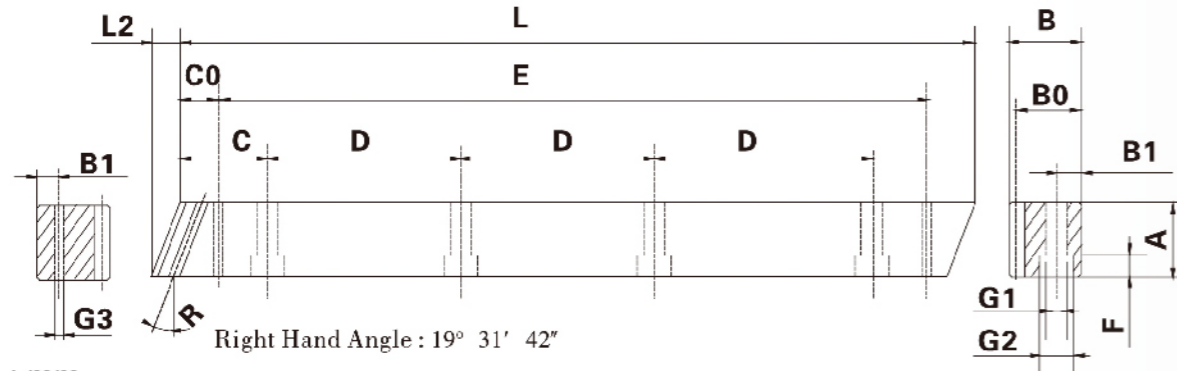
| Order Code | Module | N° of Teeth | L | L2 | A | B | B0 | C | D | N° of Holes | B1 | G1 | G2 | F | C0 | E | G3 |
|---------------------|--------|-------------|---------|-------|----|----|------|-------|-----|-------------|----|----|-----|----|-------|---------|------|
| SHGH / RHGH 1.50506 | 1.5 | 100 | 500.00 | 6.00 | 17 | 17 | 15.5 | 62.50 | 125 | 4 | 8 | 6 | 9.5 | 7 | 31.7 | 436.60 | 5.7 |
| SHGH / RHGH 1.51006 | 1.5 | 200 | 1000.00 | 6.00 | 17 | 17 | 15.5 | 62.50 | 125 | 8 | 8 | 6 | 9.5 | 7 | 31.7 | 936.60 | 5.7 |
| SHGH / RHGH 020506 | 2.0 | 75 | 500.00 | 8.50 | 24 | 24 | 22 | 62.50 | 125 | 4 | 8 | 7 | 11 | 7 | 31.7 | 436.60 | 5.7 |
| SHGH / RHGH 021006 | 2.0 | 150 | 1000.00 | 8.50 | 24 | 24 | 22 | 62.50 | 125 | 8 | 8 | 7 | 11 | 7 | 31.7 | 936.60 | 5.7 |
| SHGH / RHGH 021506 | 2.0 | 225 | 1500.00 | 8.50 | 24 | 24 | 22 | 62.50 | 125 | 12 | 8 | 7 | 11 | 7 | 31.7 | 1436.60 | 5.7 |
| SHGH / RHGH 022006 | 2.0 | 300 | 2000.00 | 8.50 | 24 | 24 | 22 | 62.50 | 125 | 16 | 8 | 7 | 11 | 7 | 31.7 | 1936.60 | 5.7 |
| SHGH / RHGH 030506 | 3.0 | 50 | 500.00 | 10.30 | 29 | 29 | 26 | 62.50 | 125 | 4 | 9 | 10 | 15 | 9 | 35.0 | 430.00 | 7.7 |
| SHGH / RHGH 031006 | 3.0 | 100 | 1000.00 | 10.30 | 29 | 29 | 26 | 62.50 | 125 | 8 | 9 | 10 | 15 | 9 | 35.0 | 930.00 | 7.7 |
| SHGH / RHGH 031506 | 3.0 | 150 | 1500.00 | 10.30 | 29 | 29 | 26 | 62.50 | 125 | 12 | 9 | 10 | 15 | 9 | 35.0 | 1430.00 | 7.7 |
| SHGH / RHGH 032006 | 3.0 | 200 | 2000.00 | 10.30 | 29 | 29 | 26 | 62.50 | 125 | 16 | 9 | 10 | 15 | 9 | 35.0 | 1930.00 | 7.7 |
| SHGH / RHGH 040506 | 4.0 | 38 | 506.67 | 13.80 | 39 | 39 | 35 | 62.50 | 125 | 4 | 12 | 10 | 15 | 9 | 33.3 | 433.00 | 7.7 |
| SHGH / RHGH 041006 | 4.0 | 75 | 1000.00 | 13.80 | 39 | 39 | 35 | 62.50 | 125 | 8 | 12 | 10 | 15 | 9 | 33.3 | 933.40 | 7.7 |
| SHGH / RHGH 041506 | 4.0 | 113 | 1506.67 | 13.80 | 39 | 39 | 35 | 62.50 | 125 | 12 | 12 | 10 | 15 | 9 | 33.3 | 1440.10 | 7.7 |
| SHGH / RHGH 042006 | 4.0 | 150 | 2000.00 | 13.80 | 39 | 39 | 35 | 62.50 | 125 | 16 | 12 | 10 | 15 | 9 | 33.3 | 1933.40 | 7.7 |
| SHGH / RHGH 050506 | 5.0 | 30 | 500.00 | 17.40 | 49 | 39 | 34 | 62.50 | 125 | 4 | 12 | 14 | 20 | 13 | 37.5 | 425.00 | 11.7 |
| SHGH / RHGH 051006 | 5.0 | 60 | 1000.00 | 17.40 | 49 | 39 | 34 | 62.50 | 125 | 8 | 12 | 14 | 20 | 13 | 37.5 | 925.00 | 11.7 |
| SHGH / RHGH 060506 | 6.0 | 25 | 500.00 | 20.90 | 59 | 49 | 43 | 62.50 | 125 | 4 | 16 | 18 | 26 | 17 | 37.5 | 425.00 | 15.7 |
| SHGH / RHGH 061006 | 6.0 | 50 | 1000.00 | 20.90 | 59 | 49 | 43 | 62.50 | 125 | 8 | 16 | 18 | 26 | 17 | 37.5 | 925.00 | 15.7 |
| SHGH / RHGH 080506 | 8.0 | 18 | 480.00 | 28.00 | 79 | 79 | 71 | 60.00 | 120 | 4 | 25 | 22 | 33 | 21 | 120.0 | 240.00 | 17.7 |
| SHGH / RHGH 081006 | 8.0 | 36 | 960.00 | 28.00 | 79 | 79 | 71 | 60.00 | 120 | 8 | 25 | 22 | 33 | 21 | 120.0 | 720.00 | 17.7 |

| | | | |
|----------------|---------------------------|--------------------------|--------------------|
| Quality | Din 6h25 | Hardness | 50°-55°HRC |
| Helical Angle | RH 19° 31' 42" | Teeth Treatment | Ground |
| Pressure Angle | 20° | Sides Surfaces Treatment | Ground |
| Material | SHGH=C45E RHGH=42CrMn4 | Heat Treatment | Induction-Hardened |

Total Pitch Error :
Gtf / 1000 ≤ 0.036 mm
Gtf / 1500 ≤ 0.043 mm (≤ 0.029 / 1000mm)
Gtf / 2000 ≤ 0.047 mm (≤ 0.024 / 1000mm)

Quality Q7

SHFQ / RHFQ Series – Din 7 Rack



Dimension : mm

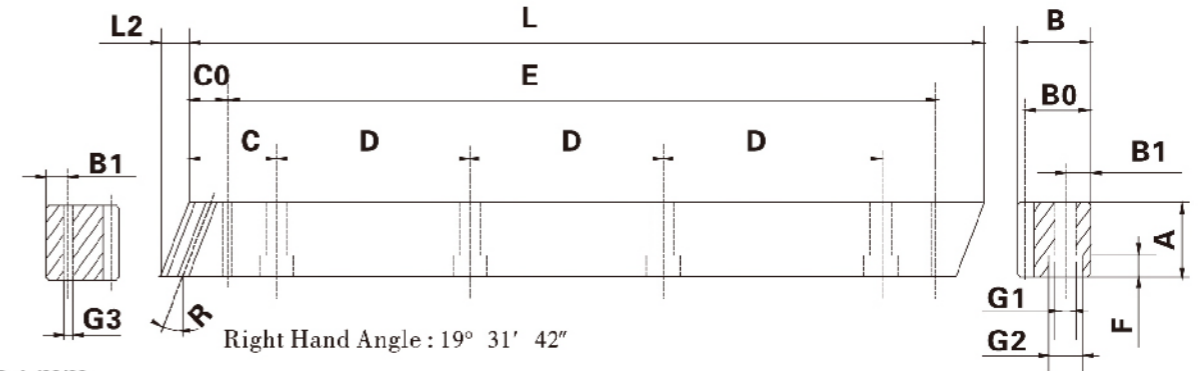
| Order Code | Module | N° of Teeth | L | L2 | A | B | B0 | C | D | N° of Holes | B1 | G1 | G2 | F | C0 | E | G3 |
|---------------------|--------|-------------|---------|-------|----|----|------|-------|-----|-------------|----|----|-----|----|-------|---------|------|
| SHFQ / RHFQ 1.50507 | 1.5 | 100 | 500.00 | 6.00 | 17 | 17 | 15.5 | 62.50 | 125 | 4 | 8 | 6 | 9.5 | 7 | 31.7 | 436.60 | 5.7 |
| SHFQ / RHFQ 1.51007 | 1.5 | 200 | 1000.00 | 6.00 | 17 | 17 | 15.5 | 62.50 | 125 | 8 | 8 | 6 | 9.5 | 7 | 31.7 | 936.60 | 5.7 |
| SHFQ / RHFQ 020507 | 2.0 | 75 | 500.00 | 8.90 | 24 | 24 | 22 | 62.50 | 125 | 4 | 8 | 7 | 11 | 7 | 31.7 | 436.60 | 5.7 |
| SHFQ / RHFQ 021007 | 2.0 | 150 | 1000.00 | 8.90 | 24 | 24 | 22 | 62.50 | 125 | 8 | 8 | 7 | 11 | 7 | 31.7 | 936.60 | 5.7 |
| SHFQ / RHFQ 021507 | 2.0 | 225 | 1500.00 | 8.90 | 24 | 24 | 22 | 62.50 | 125 | 12 | 8 | 7 | 11 | 7 | 31.7 | 1436.60 | 5.7 |
| SHFQ / RHFQ 022007 | 2.0 | 300 | 2000.00 | 8.90 | 24 | 24 | 22 | 62.50 | 125 | 16 | 8 | 7 | 11 | 7 | 31.7 | 1936.60 | 5.7 |
| SHFQ / RHFQ 030507 | 3.0 | 50 | 500.00 | 10.60 | 30 | 29 | 26 | 62.50 | 125 | 4 | 9 | 10 | 15 | 9 | 35.0 | 430.00 | 7.7 |
| SHFQ / RHFQ 031007 | 3.0 | 100 | 1000.00 | 10.60 | 30 | 29 | 26 | 62.50 | 125 | 8 | 9 | 10 | 15 | 9 | 35.0 | 930.00 | 7.7 |
| SHFQ / RHFQ 031507 | 3.0 | 150 | 1500.00 | 10.60 | 30 | 29 | 26 | 62.50 | 125 | 12 | 9 | 10 | 15 | 9 | 35.0 | 1430.00 | 7.7 |
| SHFQ / RHFQ 032006 | 3.0 | 200 | 2000.00 | 10.60 | 30 | 29 | 26 | 62.50 | 125 | 16 | 9 | 10 | 15 | 9 | 35.0 | 1930.00 | 7.7 |
| SHFQ / RHFQ 040506 | 4.0 | 38 | 506.67 | 14.20 | 40 | 39 | 35 | 62.50 | 125 | 4 | 12 | 10 | 15 | 9 | 33.3 | 433.00 | 7.7 |
| SHFQ / RHFQ 041006 | 4.0 | 75 | 1000.00 | 14.20 | 40 | 39 | 35 | 62.50 | 125 | 8 | 12 | 10 | 15 | 9 | 33.3 | 933.40 | 7.7 |
| SHFQ / RHFQ 041506 | 4.0 | 113 | 1506.67 | 14.20 | 40 | 39 | 35 | 62.50 | 125 | 12 | 12 | 10 | 15 | 9 | 33.3 | 1440.10 | 7.7 |
| SHFQ / RHFQ 042006 | 4.0 | 150 | 2000.00 | 14.20 | 40 | 39 | 35 | 62.50 | 125 | 16 | 12 | 10 | 15 | 9 | 33.3 | 1933.40 | 7.7 |
| SHFQ / RHFQ 050506 | 5.0 | 30 | 500.00 | 17.70 | 50 | 39 | 34 | 62.50 | 125 | 4 | 12 | 14 | 20 | 13 | 37.5 | 425.00 | 11.7 |
| SHFQ / RHFQ 051006 | 5.0 | 60 | 1000.00 | 17.70 | 50 | 39 | 34 | 62.50 | 125 | 8 | 12 | 14 | 20 | 13 | 37.5 | 925.00 | 11.7 |
| SHFQ / RHFQ 060506 | 6.0 | 25 | 500.00 | 20.90 | 59 | 49 | 43 | 62.50 | 125 | 4 | 16 | 18 | 26 | 17 | 37.5 | 425.00 | 15.7 |
| SHFQ / RHFQ 061006 | 6.0 | 50 | 1000.00 | 20.90 | 59 | 49 | 43 | 62.50 | 125 | 8 | 16 | 18 | 26 | 17 | 37.5 | 925.00 | 15.7 |
| SHFQ / RHFQ 080506 | 8.0 | 18 | 480.00 | 28.00 | 79 | 79 | 71 | 60.00 | 120 | 4 | 25 | 22 | 33 | 21 | 120.0 | 240.00 | 17.7 |
| SHFQ / RHFQ 081006 | 8.0 | 36 | 960.00 | 28.00 | 79 | 79 | 71 | 60.00 | 120 | 8 | 25 | 22 | 33 | 21 | 120.0 | 720.00 | 17.7 |

| | | | |
|----------------|---------------------------|--------------------------|------------------|
| Quality | Din 7e25 | Hardness | Less than 15°HRC |
| Helical Angle | RH 19° 31' 42" | Teeth Treatment | Ground |
| Pressure Angle | 20° | Sides Surfaces Treatment | Milled |
| Material | SHFQ=C45E RHFQ=42CrMn4 | Heat Treatment | Quenched |

Total Pitch Error :
Gtf / 1000 ≤ 0.052 mm

Quality Q8

SHFQ / RHFQ Series – Din 8 Rack



Dimension : mm

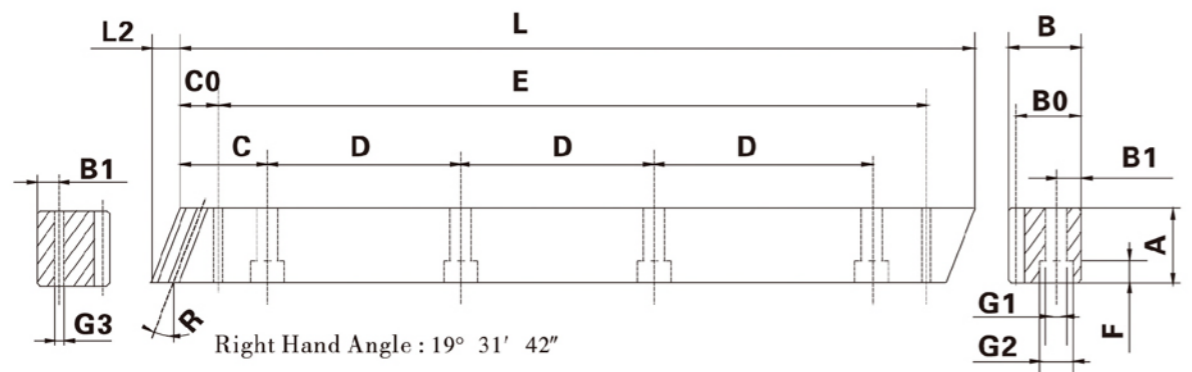
| Order Code | Module | N° of Teeth | L | L2 | A | B | B0 | C | D | N° of Holes | B1 | G1 | G2 | F | C0 | E | G3 |
|---------------------|--------|-------------|---------|-------|----|----|------|-------|-----|-------------|----|----|-----|----|-------|---------|------|
| SHFQ / RHFQ 1.50508 | 1.5 | 100 | 500.00 | 6.00 | 17 | 17 | 15.5 | 62.50 | 125 | 4 | 8 | 6 | 9.5 | 7 | 31.7 | 436.60 | 5.7 |
| SHFQ / RHFQ 1.51008 | 1.5 | 200 | 1000.00 | 6.00 | 17 | 17 | 15.5 | 62.50 | 125 | 8 | 8 | 6 | 9.5 | 7 | 31.7 | 936.60 | 5.7 |
| SHFQ / RHFQ 020508 | 2.0 | 75 | 500.00 | 8.90 | 24 | 24 | 22 | 62.50 | 125 | 4 | 8 | 7 | 11 | 7 | 31.7 | 436.60 | 5.7 |
| SHFQ / RHFQ 021008 | 2.0 | 150 | 1000.00 | 8.90 | 24 | 24 | 22 | 62.50 | 125 | 8 | 8 | 7 | 11 | 7 | 31.7 | 936.60 | 5.7 |
| SHFQ / RHFQ 021508 | 2.0 | 225 | 1500.00 | 8.90 | 24 | 24 | 22 | 62.50 | 125 | 12 | 8 | 7 | 11 | 7 | 31.7 | 1436.60 | 5.7 |
| SHFQ / RHFQ 022008 | 2.0 | 300 | 2000.00 | 8.90 | 24 | 24 | 22 | 62.50 | 125 | 16 | 8 | 7 | 11 | 7 | 31.7 | 1936.60 | 5.7 |
| SHFQ / RHFQ 030508 | 3.0 | 50 | 500.00 | 10.60 | 30 | 29 | 26 | 62.50 | 125 | 4 | 9 | 10 | 15 | 9 | 35.0 | 430.00 | 7.7 |
| SHFQ / RHFQ 031008 | 3.0 | 100 | 1000.00 | 10.60 | 30 | 29 | 26 | 62.50 | 125 | 8 | 9 | 10 | 15 | 9 | 35.0 | 930.00 | 7.7 |
| SHFQ / RHFQ 031508 | 3.0 | 150 | 1500.00 | 10.60 | 30 | 29 | 26 | 62.50 | 125 | 12 | 9 | 10 | 15 | 9 | 35.0 | 1430.00 | 7.7 |
| SHFQ / RHFQ 032008 | 3.0 | 200 | 2000.00 | 10.60 | 30 | 29 | 26 | 62.50 | 125 | 16 | 9 | 10 | 15 | 9 | 35.0 | 1930.00 | 7.7 |
| SHFQ / RHFQ 040508 | 4.0 | 38 | 506.67 | 14.20 | 40 | 39 | 35 | 62.50 | 125 | 4 | 12 | 10 | 15 | 9 | 33.3 | 433.00 | 7.7 |
| SHFQ / RHFQ 041008 | 4.0 | 75 | 1000.00 | 14.20 | 40 | 39 | 35 | 62.50 | 125 | 8 | 12 | 10 | 15 | 9 | 33.3 | 933.40 | 7.7 |
| SHFQ / RHFQ 041508 | 4.0 | 113 | 1506.67 | 14.20 | 40 | 39 | 35 | 62.50 | 125 | 12 | 12 | 10 | 15 | 9 | 33.3 | 1440.10 | 7.7 |
| SHFQ / RHFQ 042008 | 4.0 | 150 | 2000.00 | 14.20 | 40 | 39 | 35 | 62.50 | 125 | 16 | 12 | 10 | 15 | 9 | 33.3 | 1933.40 | 7.7 |
| SHFQ / RHFQ 050508 | 5.0 | 30 | 500.00 | 17.70 | 50 | 39 | 34 | 62.50 | 125 | 4 | 12 | 14 | 20 | 13 | 37.5 | 425.00 | 11.7 |
| SHFQ / RHFQ 051008 | 5.0 | 60 | 1000.00 | 17.70 | 50 | 39 | 34 | 62.50 | 125 | 8 | 12 | 14 | 20 | 13 | 37.5 | 925.00 | 11.7 |
| SHFQ / RHFQ 060508 | 6.0 | 25 | 500.00 | 20.90 | 59 | 49 | 43 | 62.50 | 125 | 4 | 16 | 18 | 26 | 17 | 37.5 | 425.00 | 15.7 |
| SHFQ / RHFQ 061008 | 6.0 | 50 | 1000.00 | 20.90 | 59 | 49 | 43 | 62.50 | 125 | 8 | 16 | 18 | 26 | 17 | 37.5 | 925.00 | 15.7 |
| SHFQ / RHFQ 080508 | 8.0 | 18 | 480.00 | 28.00 | 79 | 79 | 71 | 60.00 | 120 | 4 | 25 | 22 | 33 | 21 | 120.0 | 240.00 | 17.7 |
| SHFQ / RHFQ 081008 | 8.0 | 36 | 960.00 | 28.00 | 79 | 79 | 71 | 60.00 | 120 | 8 | 25 | 22 | 33 | 21 | 120.0 | 720.00 | 17.7 |

| | | | |
|----------------|---------------------------|--------------------------|------------|
| Quality | Din 8e27 | Hardness | 15°-20°HRC |
| Helical Angle | RH 19° 31' 42" | Teeth Treatment | Milled |
| Pressure Angle | 20° | Sides Surfaces Treatment | Milled |
| Material | SHFQ=C45E RHFQ=42CrMn4 | Heat Treatment | Quenched |

Total Pitch Error :
Gtf / 1000 ≤ 0.100 mm
Gtf / 2000 ≤ 0.200 mm

Quality Q9

SHF Series – Din 9 Rack



Dimension : mm

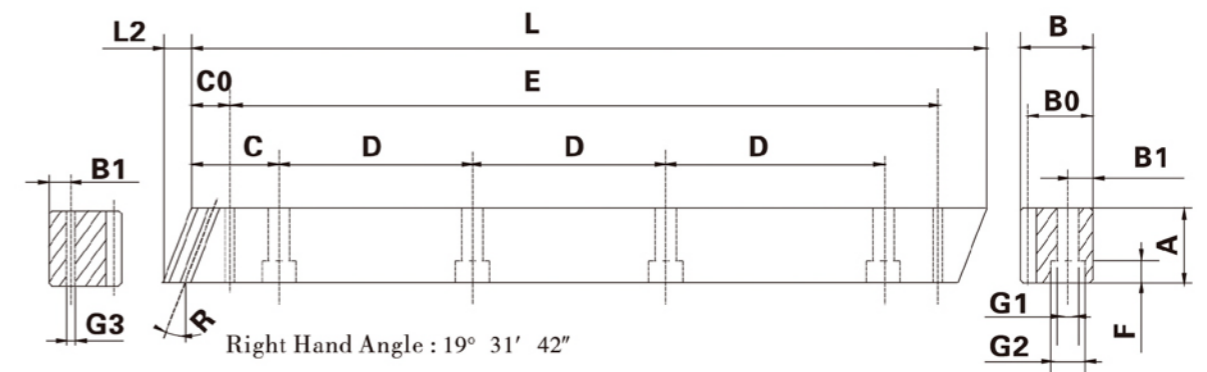
| Order Code | Module | N° of Teeth | L | L2 | A | B | B0 | C | D | N° of Holes | B1 | G1 | G2 | F | C0 | E | G3 |
|-------------|--------|-------------|---------|-------|----|----|------|-------|-----|-------------|----|----|-----|----|-------|---------|------|
| SHF 1.50509 | 1.5 | 100 | 500.00 | 6.00 | 17 | 17 | 15.5 | 62.50 | 125 | 4 | 8 | 6 | 9.5 | 7 | 31.7 | 436.60 | 5.7 |
| SHF 1.51009 | 1.5 | 200 | 1000.00 | 6.00 | 17 | 17 | 15.5 | 62.50 | 125 | 8 | 8 | 6 | 9.5 | 7 | 31.7 | 936.60 | 5.7 |
| SHF 020509 | 2.0 | 75 | 500.00 | 8.50 | 24 | 24 | 22 | 62.50 | 125 | 4 | 8 | 7 | 11 | 7 | 31.7 | 436.60 | 5.7 |
| SHF 021009 | 2.0 | 150 | 1000.00 | 8.50 | 24 | 24 | 22 | 62.50 | 125 | 8 | 8 | 7 | 11 | 7 | 31.7 | 936.60 | 5.7 |
| SHF 021509 | 2.0 | 225 | 1500.00 | 8.50 | 24 | 24 | 22 | 62.50 | 125 | 12 | 8 | 7 | 11 | 7 | 31.7 | 1436.60 | 5.7 |
| SHF 022009 | 2.0 | 300 | 2000.00 | 8.50 | 24 | 24 | 22 | 62.50 | 125 | 16 | 8 | 7 | 11 | 7 | 31.7 | 1936.60 | 5.7 |
| SHF 030509 | 3.0 | 50 | 500.00 | 10.30 | 29 | 29 | 26 | 62.50 | 125 | 4 | 9 | 10 | 15 | 9 | 35.0 | 430.00 | 7.7 |
| SHF 031009 | 3.0 | 100 | 1000.00 | 10.30 | 29 | 29 | 26 | 62.50 | 125 | 8 | 9 | 10 | 15 | 9 | 35.0 | 930.00 | 7.7 |
| SHF 031509 | 3.0 | 150 | 1500.00 | 10.30 | 29 | 29 | 26 | 62.50 | 125 | 12 | 9 | 10 | 15 | 9 | 35.0 | 1430.00 | 7.7 |
| SHF 032009 | 3.0 | 200 | 2000.00 | 10.30 | 29 | 29 | 26 | 62.50 | 125 | 16 | 9 | 10 | 15 | 9 | 35.0 | 1930.00 | 7.7 |
| SHF 040509 | 4.0 | 38 | 506.67 | 13.80 | 39 | 39 | 35 | 62.50 | 125 | 4 | 12 | 10 | 15 | 9 | 33.3 | 433.00 | 7.7 |
| SHF 041009 | 4.0 | 75 | 1000.00 | 13.80 | 39 | 39 | 35 | 62.50 | 125 | 8 | 12 | 10 | 15 | 9 | 33.3 | 933.40 | 7.7 |
| SHF 041509 | 4.0 | 113 | 1506.67 | 13.80 | 39 | 39 | 35 | 62.50 | 125 | 12 | 12 | 10 | 15 | 9 | 33.3 | 1440.10 | 7.7 |
| SHF 042009 | 4.0 | 150 | 2000.00 | 13.80 | 39 | 39 | 35 | 62.50 | 125 | 16 | 12 | 10 | 15 | 9 | 33.3 | 1933.40 | 7.7 |
| SHF 050509 | 5.0 | 30 | 500.00 | 17.40 | 49 | 39 | 34 | 62.50 | 125 | 4 | 12 | 14 | 20 | 13 | 37.5 | 425.00 | 11.7 |
| SHF 051009 | 5.0 | 60 | 1000.00 | 17.40 | 49 | 39 | 34 | 62.50 | 125 | 8 | 12 | 14 | 20 | 13 | 37.5 | 925.00 | 11.7 |
| SHF 060509 | 6.0 | 25 | 500.00 | 20.90 | 59 | 49 | 43 | 62.50 | 125 | 4 | 16 | 18 | 26 | 17 | 37.5 | 425.00 | 15.7 |
| SHF 061009 | 6.0 | 50 | 1000.00 | 20.90 | 59 | 49 | 43 | 62.50 | 125 | 8 | 16 | 18 | 26 | 17 | 37.5 | 925.00 | 15.7 |
| SHF 080509 | 8.0 | 18 | 480.00 | 28.00 | 79 | 79 | 71 | 60.00 | 120 | 4 | 25 | 22 | 33 | 21 | 120.0 | 240.00 | 17.7 |
| SHF 081009 | 8.0 | 36 | 960.00 | 28.00 | 79 | 79 | 71 | 60.00 | 120 | 8 | 25 | 22 | 33 | 21 | 120.0 | 720.00 | 17.7 |

| | | | |
|----------------|----------------|--------------------------|------------------|
| Quality | Din 9e27 | Hardness | Less than 15°HRC |
| Helical Angle | RH 19° 31' 42" | Teeth Treatment | Milled |
| Pressure Angle | 20° | Sides Surfaces Treatment | Milled |
| Material | SHF=C45E | Heat Treatment | None |

Total Pitch Error :
Gtf / 1000 ≤ 0.150 mm

Quality Q10

SHFH / RHFH Series – Din 10 Rack



Dimension : mm

| Order Code | Module | N° of Teeth | L | L2 | A | B | B0 | C | D | N° of Holes | B1 | G1 | G2 | F | C0 | E | G3 |
|---------------------|--------|-------------|---------|-------|----|----|------|-------|-----|-------------|----|----|-----|----|-------|---------|------|
| SHFH / RHFH 1.50510 | 1.5 | 100 | 500.00 | 6.00 | 17 | 17 | 15.5 | 62.50 | 125 | 4 | 8 | 6 | 9.5 | 7 | 31.7 | 436.60 | 5.7 |
| SHFH / RHFH 1.51010 | 1.5 | 200 | 1000.00 | 6.00 | 17 | 17 | 15.5 | 62.50 | 125 | 8 | 8 | 6 | 9.5 | 7 | 31.7 | 936.60 | 5.7 |
| SHFH / RHFH 020510 | 2.0 | 75 | 500.00 | 8.50 | 24 | 24 | 22 | 62.50 | 125 | 4 | 8 | 7 | 11 | 7 | 31.7 | 436.60 | 5.7 |
| SHFH / RHFH 021010 | 2.0 | 150 | 1000.00 | 8.50 | 24 | 24 | 22 | 62.50 | 125 | 8 | 8 | 7 | 11 | 7 | 31.7 | 936.60 | 5.7 |
| SHFH / RHFH 021510 | 2.0 | 225 | 1500.00 | 8.50 | 24 | 24 | 22 | 62.50 | 125 | 12 | 8 | 7 | 11 | 7 | 31.7 | 1436.60 | 5.7 |
| SHFH / RHFH 022010 | 2.0 | 300 | 2000.00 | 8.50 | 24 | 24 | 22 | 62.50 | 125 | 16 | 8 | 7 | 11 | 7 | 31.7 | 1936.60 | 5.7 |
| SHFH / RHFH 030510 | 3.0 | 50 | 500.00 | 10.30 | 29 | 29 | 26 | 62.50 | 125 | 4 | 9 | 10 | 15 | 9 | 35.0 | 430.00 | 7.7 |
| SHFH / RHFH 031010 | 3.0 | 100 | 1000.00 | 10.30 | 29 | 29 | 26 | 62.50 | 125 | 8 | 9 | 10 | 15 | 9 | 35.0 | 930.00 | 7.7 |
| SHFH / RHFH 031510 | 3.0 | 150 | 1500.00 | 10.30 | 29 | 29 | 26 | 62.50 | 125 | 12 | 9 | 10 | 15 | 9 | 35.0 | 1430.00 | 7.7 |
| SHFH / RHFH 032010 | 3.0 | 200 | 2000.00 | 10.30 | 29 | 29 | 26 | 62.50 | 125 | 16 | 9 | 10 | 15 | 9 | 35.0 | 1930.00 | 7.7 |
| SHFH / RHFH 040510 | 4.0 | 38 | 506.67 | 13.80 | 39 | 39 | 35 | 62.50 | 125 | 4 | 12 | 10 | 15 | 9 | 33.3 | 433.00 | 7.7 |
| SHFH / RHFH 041010 | 4.0 | 75 | 1000.00 | 13.80 | 39 | 39 | 35 | 62.50 | 125 | 8 | 12 | 10 | 15 | 9 | 33.3 | 933.40 | 7.7 |
| SHFH / RHFH 041510 | 4.0 | 113 | 1506.67 | 13.80 | 39 | 39 | 35 | 62.50 | 125 | 12 | 12 | 10 | 15 | 9 | 33.3 | 1440.10 | 7.7 |
| SHFH / RHFH 042010 | 4.0 | 150 | 2000.00 | 13.80 | 39 | 39 | 35 | 62.50 | 125 | 16 | 12 | 10 | 15 | 9 | 33.3 | 1933.40 | 7.7 |
| SHFH / RHFH 050510 | 5.0 | 30 | 500.00 | 17.40 | 49 | 39 | 34 | 62.50 | 125 | 4 | 12 | 14 | 20 | 13 | 37.5 | 425.00 | 11.7 |
| SHFH / RHFH 051010 | 5.0 | 60 | 1000.00 | 17.40 | 49 | 39 | 34 | 62.50 | 125 | 8 | 12 | 14 | 20 | 13 | 37.5 | 925.00 | 11.7 |
| SHFH / RHFH 060510 | 6.0 | 25 | 500.00 | 20.90 | 59 | 49 | 43 | 62.50 | 125 | 4 | 16 | 18 | 26 | 17 | 37.5 | 425.00 | 15.7 |
| SHFH / RHFH 061010 | 6.0 | 50 | 1000.00 | 20.90 | 59 | 49 | 43 | 62.50 | 125 | 8 | 16 | 18 | 26 | 17 | 37.5 | 925.00 | 15.7 |
| SHFH / RHFH 080510 | 8.0 | 18 | 480.00 | 28.00 | 79 | 79 | 71 | 60.00 | 120 | 4 | 25 | 22 | 33 | 21 | 120.0 | 240.00 | 17.7 |
| SHFH / RHFH 081010 | 8.0 | 36 | 960.00 | 28.00 | 79 | 79 | 71 | 60.00 | 120 | 8 | 25 | 22 | 33 | 21 | 120.0 | 720.00 | 17.7 |

| | | | |
|----------------|---------------------------|--------------------------|--------------------|
| Quality | Din 10e27 | Hardness | 15°-55°HRC |
| Helical Angle | RH 19° 31' 42" | Teeth Treatment | Milled |
| Pressure Angle | 20° | Sides Surfaces Treatment | Milled |
| Material | SHFH=C45E RHFH=42CrMn4 | Heat Treatment | Induction Hardened |

Total Pitch Error :
Gtf / 1000 ≤ 0.200 mm